

Datasheet for ABIN630167  
**anti-Asporin antibody (Middle Region)**



[Go to Product page](#)

2 Images

## Overview

Quantity:	100 µg
Target:	Asporin (ASPN)
Binding Specificity:	Middle Region
Reactivity:	Human, Rat
Host:	Rabbit
Clonality:	Polyclonal
Conjugate:	This Asporin antibody is un-conjugated
Application:	Western Blotting (WB), Immunohistochemistry (IHC)

## Product Details

Immunogen:	Asporin antibody was raised using the middle region of ASPN corresponding to a region with amino acids NKISTVELEDFKRYKELQRLGLGNNKITDIENGLANIPRVREIHLENNK
Specificity:	Asporin antibody was raised against the middle region of ASPN
Purification:	Purified

## Target Details

Target:	Asporin (ASPN)
Alternative Name:	Asporin ( <a href="#">ASPN Products</a> )
Background:	ASPN belongs to a family of leucine-rich repeat (LRR) proteins associated with the cartilage matrix. The name asporin reflects the unique aspartate-rich N terminus and the overall similarity to decorin.

## Target Details

Molecular Weight: 42 kDa (MW of target protein)

## Application Details

Application Notes: WB: 2.5 µg/mL, IHC: 4-8 µg/mL  
Optimal conditions should be determined by the investigator.

Comment: Asporin Blocking Peptide, catalog no. 33R-6743, is also available for use as a blocking control in assays to test for specificity of this Asporin antibody

Restrictions: For Research Use only

## Handling

Format: Lyophilized

Reconstitution: Lyophilized powder. Add distilled water for a 1 mg/mL concentration of ASPN antibody in PBS

Concentration: Lot specific

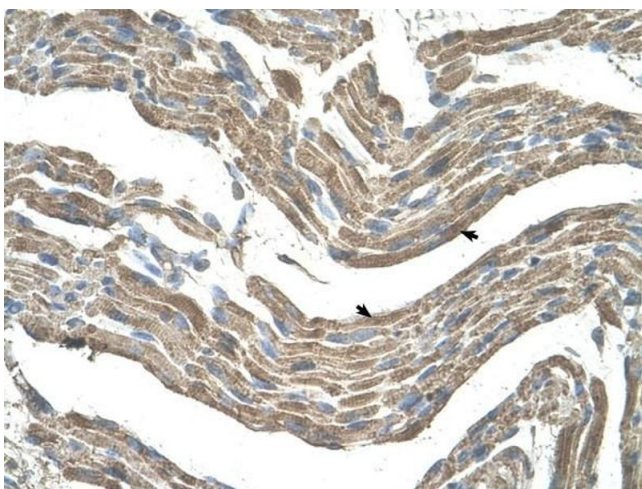
Buffer: PBS

Handling Advice: Avoid repeated freeze/thaw cycles.  
Dilute only prior to immediate use.

Storage: 4 °C/-20 °C

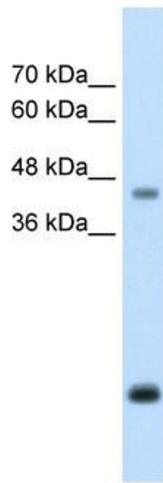
Storage Comment: Store at 2-8 °C for short periods. For longer periods of storage, store at -20 °C.

## Images



### Immunohistochemistry

**Image 1.** Asporin antibody was used for immunohistochemistry at a concentration of 4-8 ug/ml to stain Skeletal muscle cells (arrows) in Human Muscle. Magnification is at 400X



### Western Blotting

**Image 2.** Asporin antibody used at 2.5 ug/ml to detect target protein.