

Datasheet for ABIN630172 **anti-MCM4 antibody (N-Term)**



[Go to Product page](#)

1 Image

Overview

Quantity:	100 µg
Target:	MCM4
Binding Specificity:	N-Term
Reactivity:	Human
Host:	Rabbit
Clonality:	Polyclonal
Conjugate:	This MCM4 antibody is un-conjugated
Application:	Western Blotting (WB)

Product Details

Immunogen:	MCM4 antibody was raised using the N terminal of MCM4 corresponding to a region with amino acids SRVEGTPRSGVRGTPVRQRPDLGSAQKGLQVDLQSDGAAAEDIVASEQSL
Specificity:	MCM4 antibody was raised against the N terminal of MCM4
Purification:	Purified

Target Details

Target:	MCM4
Alternative Name:	MCM4 (MCM4 Products)
Background:	The protein encoded by MCM4 is one of the highly conserved mini-chromosome maintenance proteins (MCM) that are essential for the initiation of eukaryotic genome replication. The hexameric protein complex formed by MCM proteins is a key component of the pre-replication

Target Details

complex (pre_RC) and may be involved in the formation of replication forks and in the recruitment of other DNA replication related proteins. The MCM complex consisting of this protein and MCM2, 6 and 7 proteins possesses DNA helicase activity, and may act as a DNA unwinding enzyme. The phosphorylation of this protein by CDC2 kinase reduces the DNA helicase activity and chromatin binding of the MCM complex. This gene is mapped to a region on the chromosome 8 head-to-head next to the PRkDaC/DNA-PK, a DNA-activated protein kinase involved in the repair of DNA double-strand breaks. Alternatively spliced transcript variants encoding the same protein have been reported.

Molecular Weight: 95 kDa (MW of target protein)

Pathways: [DNA Damage Repair](#), [Mitotic G1-G1/S Phases](#), [DNA Replication](#), [Chromatin Binding](#), [Synthesis of DNA](#)

Application Details

Application Notes: WB: 2.5 µg/mL
Optimal conditions should be determined by the investigator.

Comment: MCM4 Blocking Peptide, catalog no. 33R-8784, is also available for use as a blocking control in assays to test for specificity of this MCM4 antibody

Restrictions: For Research Use only

Handling

Format: Lyophilized

Reconstitution: Lyophilized powder. Add distilled water for a 1 mg/mL concentration of MCM4 antibody in PBS

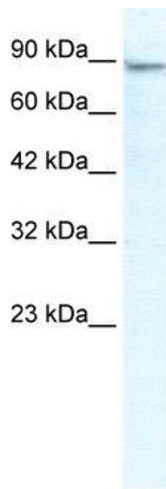
Concentration: Lot specific

Buffer: PBS

Handling Advice: Avoid repeated freeze/thaw cycles.
Dilute only prior to immediate use.

Storage: 4 °C/-20 °C

Storage Comment: Store at 2-8 °C for short periods. For longer periods of storage, store at -20 °C.



Western Blotting

Image 1. MCM4 antibody used at 2.5 ug/ml to detect target protein.