

Datasheet for ABIN630179
anti-Septin 10 antibody (C-Term)



[Go to Product page](#)

1 Image

Overview

Quantity:	100 µg
Target:	Septin 10 (SEPT10)
Binding Specificity:	C-Term
Reactivity:	Human
Host:	Rabbit
Clonality:	Polyclonal
Conjugate:	This Septin 10 antibody is un-conjugated
Application:	Western Blotting (WB)

Product Details

Immunogen:	Septin 10 antibody was raised using the C terminal of 40431 corresponding to a region with amino acids ERMKLEEKRRLLLEEEIIAFSKKKATSEIFHSQSFLATGSNLRKDKDRKNS
Specificity:	Septin 10 antibody was raised against the C terminal of 40431
Purification:	Purified

Target Details

Target:	Septin 10 (SEPT10)
Alternative Name:	Septin 10 (SEPT10 Products)
Background:	SEPT10 is a member of the septin family of cytoskeletal proteins with GTPase activity. This protein localizes to the cytoplasm and nucleus and displays GTP-binding and GTPase activity.

Target Details

Molecular Weight: 52 kDa (MW of target protein)

Application Details

Application Notes: WB: 1.25 µg/mL
Optimal conditions should be determined by the investigator.

Restrictions: For Research Use only

Handling

Format: Lyophilized

Reconstitution: Lyophilized powder. Add distilled water for a 1 mg/mL concentration of 40422 antibody in PBS

Concentration: Lot specific

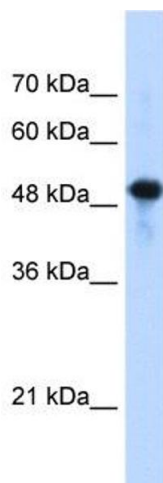
Buffer: PBS

Handling Advice: Avoid repeated freeze/thaw cycles.
Dilute only prior to immediate use.

Storage: 4 °C/-20 °C

Storage Comment: Store at 2-8 °C for short periods. For longer periods of storage, store at -20 °C.

Images



Western Blotting

Image 1. Septin 10 antibody used at 1.25 µg/ml to detect target protein.