

Datasheet for ABIN630180
anti-MCM8 antibody (N-Term)



[Go to Product page](#)

1 Image

Overview

Quantity:	100 µg
Target:	MCM8
Binding Specificity:	N-Term
Reactivity:	Human, Mouse
Host:	Rabbit
Clonality:	Polyclonal
Conjugate:	This MCM8 antibody is un-conjugated
Application:	Western Blotting (WB)

Product Details

Immunogen:	MCM8 antibody was raised using the N terminal of MCM8 corresponding to a region with amino acids ELRDAPEKTLACMGLAIHQVLTKDLERHAAELQAQEGLSNDGETMVNVPH
Specificity:	MCM8 antibody was raised against the N terminal of MCM8
Purification:	Purified

Target Details

Target:	MCM8
Alternative Name:	MCM8 (MCM8 Products)
Background:	MCM8 is one of the highly conserved mini-chromosome maintenance proteins (MCM) that are essential for the initiation of eukaryotic genome replication. The hexameric protein complex formed by the MCM proteins is a key component of the pre-replication complex (pre_RC) and

Target Details

may be involved in the formation of replication forks and in the recruitment of other DNA replication related proteins. This protein contains the central domain that is conserved among the MCM proteins. This protein has been shown to co-immunoprecipitate with MCM4, 6 and 7, which suggests that it may interact with other MCM proteins and play a role in DNA replication. Alternatively spliced transcript variants encoding distinct isoforms have been described.

Molecular Weight: 92 kDa (MW of target protein)

Pathways: [Mitotic G1-G1/S Phases](#), [DNA Replication](#), [Synthesis of DNA](#)

Application Details

Application Notes: WB: 0.125 µg/mL
Optimal conditions should be determined by the investigator.

Comment: MCM8 Blocking Peptide, catalog no. 33R-2569, is also available for use as a blocking control in assays to test for specificity of this MCM8 antibody

Restrictions: For Research Use only

Handling

Format: Lyophilized

Reconstitution: Lyophilized powder. Add distilled water for a 1 mg/mL concentration of MCM8 antibody in PBS

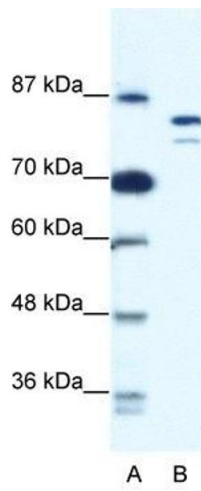
Concentration: Lot specific

Buffer: PBS

Handling Advice: Avoid repeated freeze/thaw cycles.
Dilute only prior to immediate use.

Storage: 4 °C/-20 °C

Storage Comment: Store at 2-8 °C for short periods. For longer periods of storage, store at -20 °C.



Western Blotting

Image 1. MCM8 antibody used at 0.125 ug/ml to detect target protein.