

Datasheet for ABIN630187
anti-MCM6 antibody (C-Term)



[Go to Product page](#)

2 Images

Overview

Quantity:	100 µg
Target:	MCM6
Binding Specificity:	C-Term
Reactivity:	Human, Dog
Host:	Rabbit
Clonality:	Polyclonal
Conjugate:	This MCM6 antibody is un-conjugated
Application:	Western Blotting (WB), Immunohistochemistry (IHC)

Product Details

Immunogen:	MCM6 antibody was raised using the C terminal of MCM6 corresponding to a region with amino acids RIIKVIHRLTHYDHVLIELTQAGLKGSTEGSESYEEDPYLVVNPNYLLE
Specificity:	MCM6 antibody was raised against the C terminal of MCM6
Purification:	Purified

Target Details

Target:	MCM6
Alternative Name:	MCM6 (MCM6 Products)
Background:	The protein encoded by the MCM6 gene is one of the highly conserved mini-chromosome maintenance proteins (MCM) that are essential for the initiation of eukaryotic genome replication. The hexameric protein complex formed by the MCM proteins is a key component of

Target Details

the pre-replication complex (pre_RC) and may be involved in the formation of replication forks and in the recruitment of other DNA replication related proteins. The MCM complex consisting of this protein and MCM2, 4 and 7 proteins possesses DNA helicase activity, and may act as a DNA unwinding enzyme. The phosphorylation of the complex by CDC2 kinase reduces the helicase activity, suggesting a role in the regulation of DNA replication.

Molecular Weight: 90 kDa (MW of target protein)

Pathways: [DNA Damage Repair](#), [Mitotic G1-G1/S Phases](#), [DNA Replication](#), [Synthesis of DNA](#)

Application Details

Application Notes: WB: 1.25 µg/mL, IHC: 4-8 µg/mL
Optimal conditions should be determined by the investigator.

Comment: MCM6 Blocking Peptide, catalog no. 33R-7967, is also available for use as a blocking control in assays to test for specificity of this MCM6 antibody

Restrictions: For Research Use only

Handling

Format: Lyophilized

Reconstitution: Lyophilized powder. Add distilled water for a 1 mg/mL concentration of MCM6 antibody in PBS

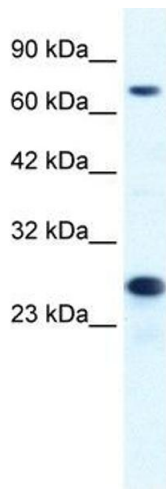
Concentration: Lot specific

Buffer: PBS

Handling Advice: Avoid repeated freeze/thaw cycles.
Dilute only prior to immediate use.

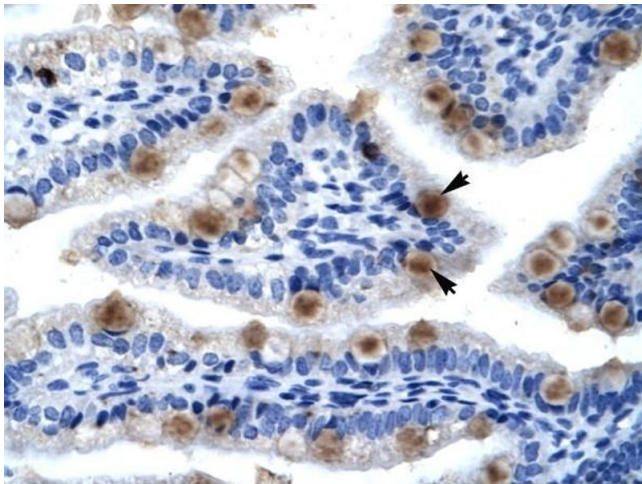
Storage: 4 °C/-20 °C

Storage Comment: Store at 2-8 °C for short periods. For longer periods of storage, store at -20 °C.



Western Blotting

Image 1. MCM6 antibody used at 1.25 ug/ml to detect target protein.



Immunohistochemistry

Image 2. MCM6 antibody was used for immunohistochemistry at a concentration of 4-8 ug/ml to stain Epithelial cells of intestinal villus (Indicated with Arrows) in Human Intestine. Magnification is at 400X