

Datasheet for ABIN630188  
**anti-KIF25 antibody (C-Term)**



[Go to Product page](#)

2 Images

## Overview

Quantity:	100 µg
Target:	KIF25
Binding Specificity:	C-Term
Reactivity:	Human
Host:	Rabbit
Clonality:	Polyclonal
Conjugate:	This KIF25 antibody is un-conjugated
Application:	Western Blotting (WB), Immunohistochemistry (IHC)

## Product Details

Immunogen:	KIF25 antibody was raised using the C terminal of KIF25 corresponding to a region with amino acids VLGALLEHRGHAPYRNSRLTHLLQDCLGGDAKLLVILCISPSQRHLAQLT
Specificity:	KIF25 antibody was raised against the C terminal of KIF25
Purification:	Purified

## Target Details

Target:	KIF25
Alternative Name:	KIF25 ( <a href="#">KIF25 Products</a> )
Background:	The protein encoded by the KIF25 gene is a member of the kinesin-like protein family. Protein family members are microtubule-dependent molecular motors that transport organelles within cells and move chromosomes during cell division. However, the particular function of this gene

## Target Details

---

product has not yet been determined. Two alternatively spliced transcript variants which encode products have been described. Other splice variants have been found that lack exon 2 and the initiation codon for translation.

Molecular Weight: 41 kDa (MW of target protein)

## Application Details

---

Application Notes: WB: 2.5 µg/mL, IHC: 4-8 µg/mL  
Optimal conditions should be determined by the investigator.

Comment: KIF25 Blocking Peptide, catalog no. 33R-9657, is also available for use as a blocking control in assays to test for specificity of this KIF25 antibody

Restrictions: For Research Use only

## Handling

---

Format: Lyophilized

Reconstitution: Lyophilized powder. Add distilled water for a 1 mg/mL concentration of KIF25 antibody in PBS

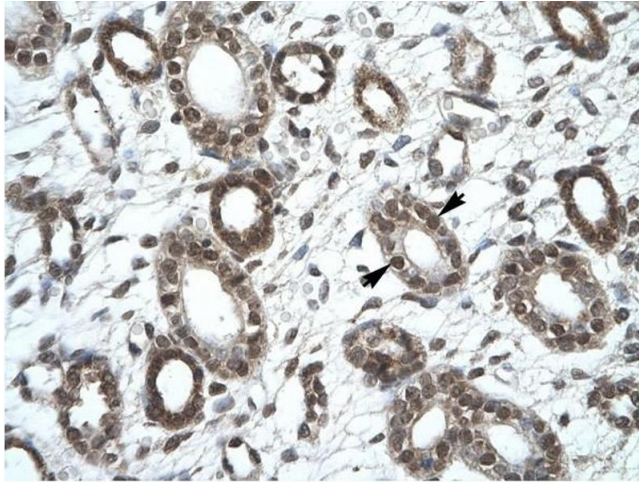
Concentration: Lot specific

Buffer: PBS

Handling Advice: Avoid repeated freeze/thaw cycles.  
Dilute only prior to immediate use.

Storage: 4 °C/-20 °C

Storage Comment: Store at 2-8 °C for short periods. For longer periods of storage, store at -20 °C.



### Immunohistochemistry

**Image 1.** KIF25 antibody was used for immunohistochemistry at a concentration of 4-8 ug/ml to stain Epithelial cells of collecting tubule (Indicated with Arrows) in Human Kidney. Magnification is at 400X



### Western Blotting

**Image 2.** KIF25 antibody used at 2.5 ug/ml to detect target protein.