

Datasheet for ABIN630190 **anti-PRIM1 antibody (N-Term)**



[Go to Product page](#)

1 Image

Overview

Quantity:	100 µg
Target:	PRIM1
Binding Specificity:	N-Term
Reactivity:	Human, Mouse
Host:	Rabbit
Clonality:	Polyclonal
Conjugate:	This PRIM1 antibody is un-conjugated
Application:	Western Blotting (WB)

Product Details

Immunogen:	PRIM1 antibody was raised using the N terminal of PRIM1 corresponding to a region with amino acids SQYYRWLNYYGGVIKNYFQHREFSFTLKDDIYIRYQSFNNQSDLEKEMQKM
Specificity:	PRIM1 antibody was raised against the N terminal of PRIM1
Purification:	Purified

Target Details

Target:	PRIM1
Alternative Name:	PRIM1 (PRIM1 Products)
Background:	The replication of DNA in eukaryotic cells is carried out by a complex chromosomal replication apparatus, in which DNA polymerase alpha and primase are two key enzymatic components. Primase, which is a heterodimer of a small subunit and a large subunit, synthesizes small RNA

Target Details

primers for the Okazaki fragments made during discontinuous DNA replication. PRIM1 is the small, 49 kDa primase subunit.

Molecular Weight: 50 kDa (MW of target protein)

Pathways: [Telomere Maintenance](#), [Mitotic G1-G1/S Phases](#), [DNA Replication](#), [Synthesis of DNA](#), [SARS-CoV-2 Protein Interactome](#)

Application Details

Application Notes: WB: 1.25 µg/mL
Optimal conditions should be determined by the investigator.

Comment: PRIM1 Blocking Peptide, catalog no. 33R-8737, is also available for use as a blocking control in assays to test for specificity of this PRIM1 antibody

Restrictions: For Research Use only

Handling

Format: Lyophilized

Reconstitution: Lyophilized powder. Add distilled water for a 1 mg/mL concentration of PRIM1 antibody in PBS

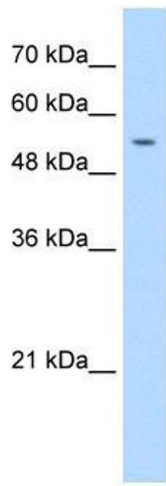
Concentration: Lot specific

Buffer: PBS

Handling Advice: Avoid repeated freeze/thaw cycles.
Dilute only prior to immediate use.

Storage: 4 °C/-20 °C

Storage Comment: Store at 2-8 °C for short periods. For longer periods of storage, store at -20 °C.



Western Blotting

Image 1. PRIM1 antibody used at 1.25 ug/ml to detect target protein.