

Datasheet for ABIN630195 **anti-NOLC1 antibody (C-Term)**

4 Images



[Go to Product page](#)

Overview

| | |
|----------------------|--|
| Quantity: | 100 µg |
| Target: | NOLC1 |
| Binding Specificity: | C-Term |
| Reactivity: | Human, Rat, Mouse, Dog, Drosophila melanogaster, Arabidopsis |
| Host: | Rabbit |
| Clonality: | Polyclonal |
| Conjugate: | This NOLC1 antibody is un-conjugated |
| Application: | Western Blotting (WB), Immunohistochemistry (IHC) |

Product Details

| | |
|---------------|--|
| Immunogen: | NOLC1 antibody was raised using the C terminal of NOLC1 corresponding to a region with amino acids DNSFDAKRGAAAGDWGERANQVLKFTKGKSFRRHEKTKKKRGSYRGGSSISVQ |
| Specificity: | NOLC1 antibody was raised against the C terminal of NOLC1 |
| Purification: | Purified |

Target Details

| | |
|-------------------|---|
| Target: | NOLC1 |
| Alternative Name: | NOLC1 (NOLC1 Products) |
| Background: | Related to nucleologenesis, NOLC1 may play a role in the maintenance of the fundamental structure of the fibrillar center and dense fibrillar component in the nucleolus. It has intrinsic GTPase and ATPase activities. NOLC1 may play an important role in transcription catalyzed by |

Target Details

RNA polymerase I.

Molecular Weight: 73 kDa (MW of target protein)

Pathways: [Regulation of G-Protein Coupled Receptor Protein Signaling](#)

Application Details

Application Notes: WB: 2.5 µg/mL, IHC: 4-8 µg/mL
Optimal conditions should be determined by the investigator.

Comment: NOLC1 Blocking Peptide, catalog no. 33R-2089, is also available for use as a blocking control in assays to test for specificity of this NOLC1 antibody

Restrictions: For Research Use only

Handling

Format: Lyophilized

Reconstitution: Lyophilized powder. Add distilled water for a 1 mg/mL concentration of NOLC1 antibody in PBS

Concentration: Lot specific

Buffer: PBS

Handling Advice: Avoid repeated freeze/thaw cycles.
Dilute only prior to immediate use.

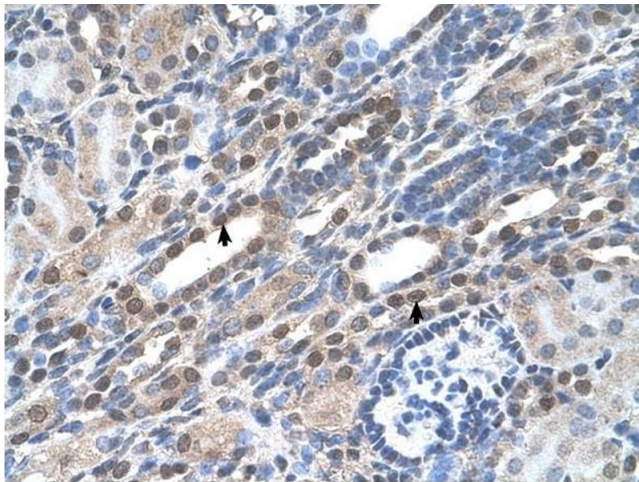
Storage: 4 °C/-20 °C

Storage Comment: Store at 2-8 °C for short periods. For longer periods of storage, store at -20 °C.



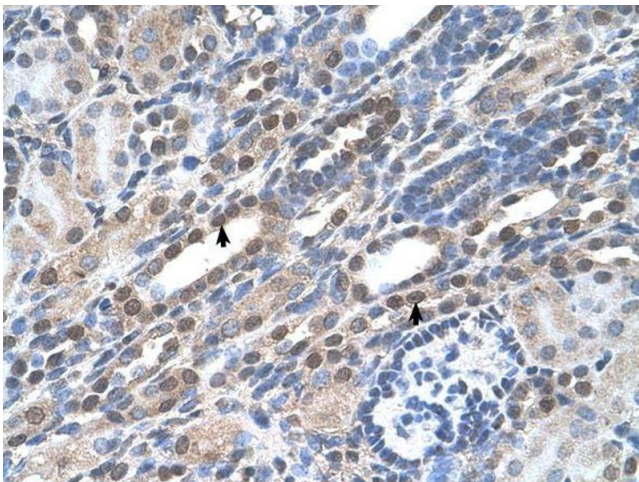
Immunofluorescence

Image 1. NOLC1 antibody used at a dilution of 1:250 to detect zebrafish kidney.



Immunohistochemistry

Image 2. NOLC1 antibody was used for immunohistochemistry at a concentration of 4-8 ug/ml to stain Epithelial cells of renal tubule (arrows) in Human Kidney. Magnification is at 400X



Immunohistochemistry

Image 3. NOLC1 antibody was used for immunohistochemistry at a concentration of 4-8 ug/ml. Magnification is at 400X

Please check the [product details page](#) for more images. Overall 4 images are available for ABIN630195.