

Datasheet for ABIN630196 **anti-LIG4 antibody (N-Term)**

2 Images



[Go to Product page](#)

Overview

Quantity:	100 µg
Target:	LIG4
Binding Specificity:	N-Term
Reactivity:	Human
Host:	Rabbit
Clonality:	Polyclonal
Conjugate:	This LIG4 antibody is un-conjugated
Application:	Western Blotting (WB), Immunohistochemistry (IHC)

Product Details

Immunogen:	LIG4 antibody was raised using the N terminal of LIG4 corresponding to a region with amino acids DGERMQMHKDGDVYKYFSRNGYNYTDQFGASPTEGSLTPFIHNAFKADIQ
Specificity:	LIG4 antibody was raised against the N terminal of LIG4
Purification:	Purified

Target Details

Target:	LIG4
Alternative Name:	LIG4 (LIG4 Products)
Background:	LIG4 encodes a DNA ligase that joins single-strand breaks in a double-stranded polydeoxynucleotide in an ATP-dependent reaction. This protein is essential for V(D)J recombination and DNA double-strand break (DSB) repair through nonhomologous end joining

Target Details

(NHEJ). This protein forms a complex with the X-ray repair cross complementing protein 4 (XRCC4), and further interacts with the DNA-dependent protein kinase (DNA-PK). Both XRCC4 and DNA-PK are known to be required for NHEJ. The crystal structure of the complex formed by this protein and XRCC4 has been resolved. Defects in this gene are the cause of LIG4 syndrome.

Molecular Weight: 104 kDa (MW of target protein)

Pathways: [DNA Damage Repair](#), [Production of Molecular Mediator of Immune Response](#)

Application Details

Application Notes: WB: 1.25 µg/mL, IHC: 4-8 µg/mL
Optimal conditions should be determined by the investigator.

Comment: LIG4 Blocking Peptide, catalog no. 33R-1948, is also available for use as a blocking control in assays to test for specificity of this LIG4 antibody

Restrictions: For Research Use only

Handling

Format: Lyophilized

Reconstitution: Lyophilized powder. Add distilled water for a 1 mg/mL concentration of LIG4 antibody in PBS

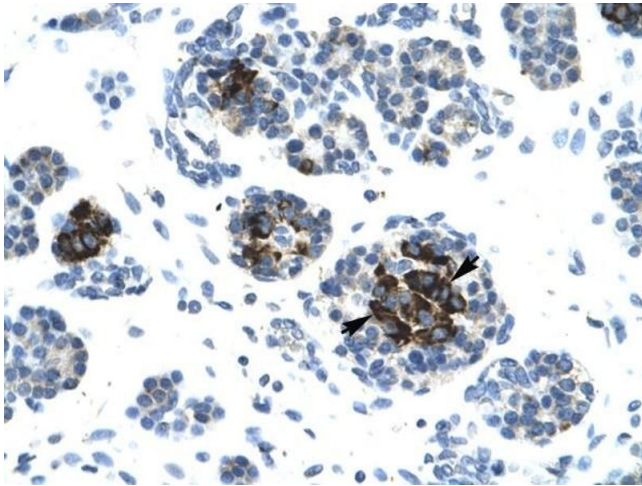
Concentration: Lot specific

Buffer: PBS

Handling Advice: Avoid repeated freeze/thaw cycles.
Dilute only prior to immediate use.

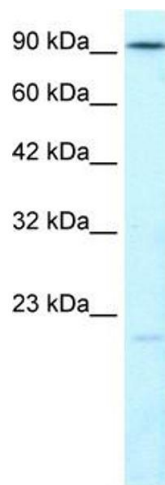
Storage: 4 °C/-20 °C

Storage Comment: Store at 2-8 °C for short periods. For longer periods of storage, store at -20 °C.



Immunohistochemistry

Image 1. LIG4 antibody was used for immunohistochemistry at a concentration of 4-8 ug/ml to stain Epithelial cells of pancreatic acinus (Indicated with Arrows) in Human Pancreas. Magnification is at 400X



Western Blotting

Image 2. LIG4 antibody used at 1.25 ug/ml to detect target protein.