

## Datasheet for ABIN630197 **anti-RBMS1 antibody (C-Term)**

### 2 Images



[Go to Product page](#)

### Overview

Quantity:	100 µg
Target:	RBMS1
Binding Specificity:	C-Term
Reactivity:	Human, Mouse, Dog
Host:	Rabbit
Clonality:	Polyclonal
Conjugate:	This RBMS1 antibody is un-conjugated
Application:	Western Blotting (WB), Immunohistochemistry (IHC)

### Product Details

Immunogen:	RBMS1 antibody was raised using the C terminal of RBMS1 corresponding to a region with amino acids TYMPATSAMQGAYLPQYAHMQTTAVPVEEASGQQQVAVETSNDHSPYTFQ
Specificity:	RBMS1 antibody was raised against the C terminal of RBMS1
Purification:	Purified

### Target Details

Target:	RBMS1
Alternative Name:	RBMS1 ( <a href="#">RBMS1 Products</a> )
Background:	RBMS1 is a member of a small family of proteins which bind single stranded DNA/RNA. These proteins are characterized by the presence of two sets of ribonucleoprotein consensus sequence (RNP-CS) that contain conserved motifs, RNP1 and RNP2, originally described in RNA

## Target Details

---

binding proteins, and required for DNA binding. These proteins have been implicated in such diverse functions as DNA replication, gene transcription, cell cycle progression and apoptosis.

Molecular Weight: 44 kDa (MW of target protein)

## Application Details

---

Application Notes: WB: 2.5 µg/mL, IHC: 4-8 µg/mL  
Optimal conditions should be determined by the investigator.

Comment: RBMS1 Blocking Peptide, catalog no. 33R-9396, is also available for use as a blocking control in assays to test for specificity of this RBMS1 antibody

Restrictions: For Research Use only

## Handling

---

Format: Lyophilized

Reconstitution: Lyophilized powder. Add distilled water for a 1 mg/mL concentration of RBMS1 antibody in PBS

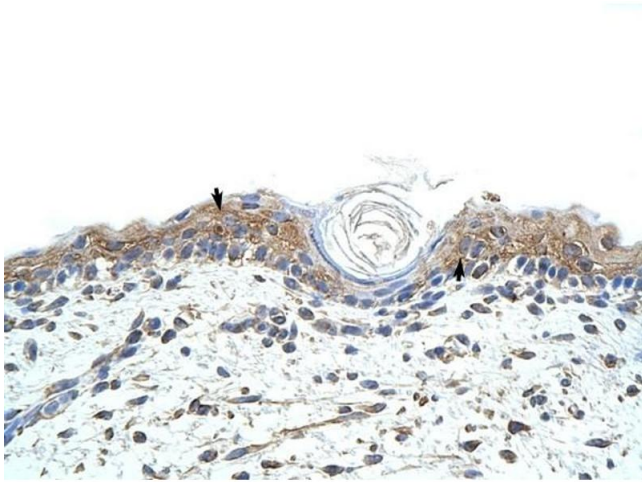
Concentration: Lot specific

Buffer: PBS

Handling Advice: Avoid repeated freeze/thaw cycles.  
Dilute only prior to immediate use.

Storage: 4 °C/-20 °C

Storage Comment: Store at 2-8 °C for short periods. For longer periods of storage, store at -20 °C.



### Immunohistochemistry

**Image 1.** RBMS1 antibody was used for immunohistochemistry at a concentration of 4-8 ug/ml to stain Squamous epithelial cells (arrows) in Human Skin. Magnification is at 400X



### Western Blotting

**Image 2.** RBMS1 antibody used at 2.5 ug/ml to detect target protein.