

Datasheet for ABIN630199
anti-RNASEH2A antibody (Middle Region)



[Go to Product page](#)

2 Images

Overview

Quantity:	100 µg
Target:	RNASEH2A
Binding Specificity:	Middle Region
Reactivity:	Human, Zebrafish (Danio rerio)
Host:	Rabbit
Clonality:	Polyclonal
Conjugate:	This RNASEH2A antibody is un-conjugated
Application:	Western Blotting (WB), Immunohistochemistry (IHC)

Product Details

Immunogen:	RNASEH2 A antibody was raised using the middle region of RNASEH2 corresponding to a region with amino acids AQTILEKEAEDVIWEDSASENQGLRKITSYFLNEGSQARPRSSHRYFLE
Specificity:	RNASEH2 A antibody was raised against the middle region of RNASEH2
Purification:	Purified

Target Details

Target:	RNASEH2A
Alternative Name:	RNASEH2A (RNASEH2A Products)
Background:	Of the multiple RNases H in mammals, RNase HI is the major enzyme and shows increased activity during DNA replication. It shows more homology to the RNase HII of Escherichia coli. Of the multiple RNases H in mammals, RNase HI is the major enzyme and shows increased

Target Details

activity during DNA replication. It shows more homology to the RNase HII of Escherichia coli.

Molecular Weight: 33 kDa (MW of target protein)

Application Details

Application Notes: WB: 1.25 µg/mL, IHC: 4-8 µg/mL
Optimal conditions should be determined by the investigator.

Comment: RNASEH2A Blocking Peptide, catalog no. 33R-1458, is also available for use as a blocking control in assays to test for specificity of this RNASEH2A antibody

Restrictions: For Research Use only

Handling

Format: Lyophilized

Reconstitution: Lyophilized powder. Add distilled water for a 1 mg/mL concentration of RNASEH0 antibody in PBS

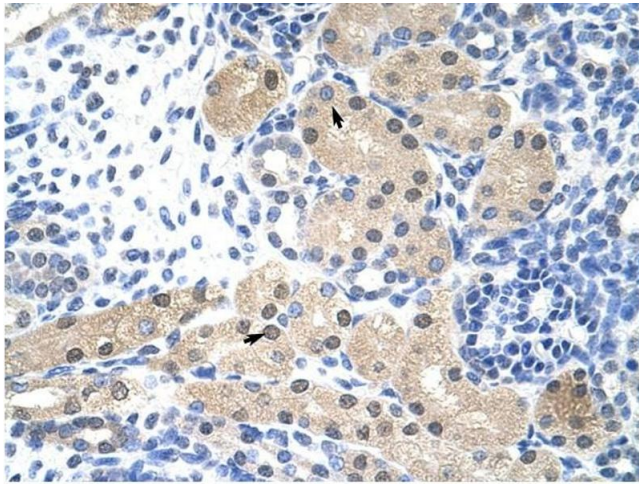
Concentration: Lot specific

Buffer: PBS

Handling Advice: Avoid repeated freeze/thaw cycles.
Dilute only prior to immediate use.

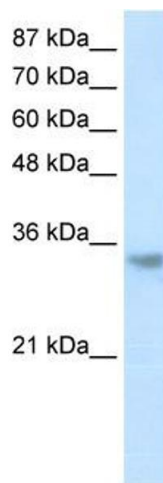
Storage: 4 °C/-20 °C

Storage Comment: Store at 2-8 °C for short periods. For longer periods of storage, store at -20 °C.



Immunohistochemistry

Image 1. RNASEH2A antibody was used for immunohistochemistry at a concentration of 4-8 ug/ml to stain Epithelial cells of renal tubule (arrows) in Human Kidney. Magnification is at 400X



Western Blotting

Image 2. RNASEH2A antibody used at 1.25 ug/ml to detect target protein.