

Datasheet for ABIN630201  
**anti-TPTE antibody (C-Term)**



[Go to Product page](#)

2 Images

## Overview

Quantity:	100 µg
Target:	TPTE
Binding Specificity:	C-Term
Reactivity:	Human
Host:	Rabbit
Clonality:	Polyclonal
Conjugate:	This TPTE antibody is un-conjugated
Application:	Western Blotting (WB), Immunohistochemistry (IHC)

## Product Details

Immunogen:	TPTE antibody was raised using the C terminal of TPTE corresponding to a region with amino acids KILIDVFDGPPLYDDVKVQFFYSNLPTYDNCFSFYFWLHTSFIENNRLYL
Specificity:	TPTE antibody was raised against the C terminal of TPTE
Purification:	Purified

## Target Details

Target:	TPTE
Alternative Name:	TPTE ( <a href="#">TPTE Products</a> )
Background:	TPTE encodes a putative transmembrane tyrosine phosphatase that may be involved in signal transduction pathways of the endocrine or spermatogenic function of the testis.

## Target Details

Molecular Weight: 45 kDa (MW of target protein)

Pathways: [Inositol Metabolic Process](#)

## Application Details

Application Notes: WB: 1.25 µg/mL, IHC: 4-8 µg/mL  
Optimal conditions should be determined by the investigator.

Comment: TPTE Blocking Peptide, catalog no. 33R-4438, is also available for use as a blocking control in assays to test for specificity of this TPTE antibody

Restrictions: For Research Use only

## Handling

Format: Lyophilized

Reconstitution: Lyophilized powder. Add distilled water for a 1 mg/mL concentration of TPTE antibody in PBS

Concentration: Lot specific

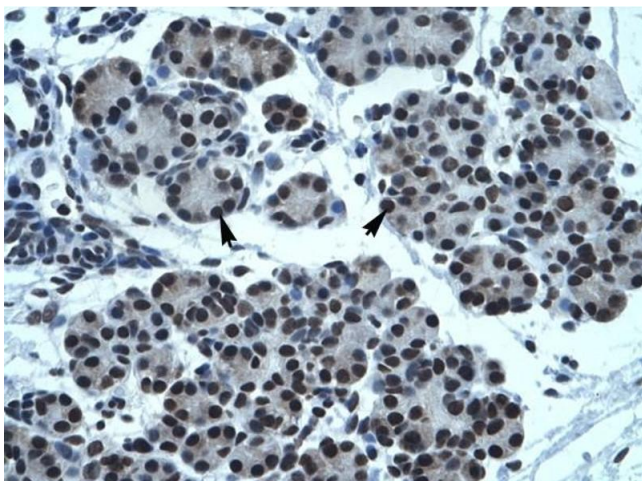
Buffer: PBS

Handling Advice: Avoid repeated freeze/thaw cycles.  
Dilute only prior to immediate use.

Storage: 4 °C/-20 °C

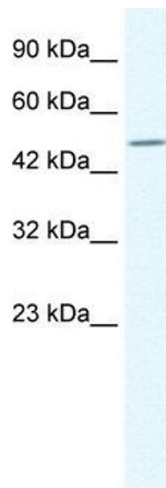
Storage Comment: Store at 2-8 °C for short periods. For longer periods of storage, store at -20 °C.

## Images



### Immunohistochemistry

**Image 1.** TPTE antibody was used for immunohistochemistry at a concentration of 4-8 µg/ml to stain Epithelial cells of pancreatic acinus (arrows) in Human Pancreas. Magnification is at 400X



### Western Blotting

**Image 2.** TPTE antibody used at 1.25 ug/ml to detect target protein.