

Datasheet for ABIN630202
anti-Cullin 5 antibody (C-Term)



[Go to Product page](#)

1 Image

Overview

| | |
|----------------------|---|
| Quantity: | 100 µg |
| Target: | Cullin 5 (CUL5) |
| Binding Specificity: | C-Term |
| Reactivity: | Human, Mouse, Rat, Zebrafish (Danio rerio), Dog |
| Host: | Rabbit |
| Clonality: | Polyclonal |
| Conjugate: | This Cullin 5 antibody is un-conjugated |
| Application: | Western Blotting (WB) |

Product Details

| | |
|---------------|---|
| Immunogen: | Cullin 5 antibody was raised using the C terminal of CUL5 corresponding to a region with amino acids VNIKILNAGAWSRSSEKVFVSLPTELEDLIPEVEEFYKKNHSGRKLHWHH |
| Specificity: | Cullin 5 antibody was raised against the C terminal of CUL5 |
| Purification: | Purified |

Target Details

| | |
|-------------------|---|
| Target: | Cullin 5 (CUL5) |
| Alternative Name: | Cullin 5 (CUL5 Products) |
| Background: | CUL5 encodes a protein that is involved in the regulation of cellular growth and promotes vif ubiquination. |

Target Details

| | |
|-------------------|--|
| Molecular Weight: | 86 kDa (MW of target protein) |
| Pathways: | Regulation of Muscle Cell Differentiation, Skeletal Muscle Fiber Development |

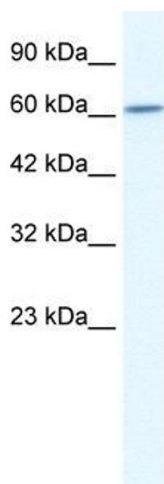
Application Details

| | |
|--------------------|--|
| Application Notes: | WB: 2.5 µg/mL Optimal conditions should be determined by the investigator. |
| Comment: | Cullin 5 Blocking Peptide, catalog no. 33R-9706, is also available for use as a blocking control in assays to test for specificity of this Cullin 5 antibody |
| Restrictions: | For Research Use only |

Handling

| | |
|------------------|---|
| Format: | Lyophilized |
| Reconstitution: | Lyophilized powder. Add distilled water for a 1 mg/mL concentration of CUL5 antibody in PBS |
| Concentration: | Lot specific |
| Buffer: | PBS |
| Handling Advice: | Avoid repeated freeze/thaw cycles. Dilute only prior to immediate use. |
| Storage: | 4 °C/-20 °C |
| Storage Comment: | Store at 2-8 °C for short periods. For longer periods of storage, store at -20 °C. |

Images



Western Blotting

Image 1. Cullin 5 antibody used at 2.5 ug/ml to detect target protein.