

## Datasheet for ABIN630204 **anti-KIFC2 antibody (N-Term)**

### 2 Images



[Go to Product page](#)

### Overview

Quantity:	100 µg
Target:	KIFC2
Binding Specificity:	N-Term
Reactivity:	Human
Host:	Rabbit
Clonality:	Polyclonal
Conjugate:	This KIFC2 antibody is un-conjugated
Application:	Western Blotting (WB), Immunohistochemistry (IHC)

### Product Details

Immunogen:	KIFC2 antibody was raised using the N terminal of KIFC2 corresponding to a region with amino acids VRPPSPDGSTSQEESPSHFTAVPGEPLGDETQGQQPLQLEEDQRAWQRLE
Specificity:	KIFC2 antibody was raised against the N terminal of KIFC2
Purification:	Purified

### Target Details

Target:	KIFC2
Alternative Name:	KIFC2 ( <a href="#">KIFC2 Products</a> )
Background:	Members of the kinesin superfamily of microtubule-associated proteins are involved in a variety of intracellular processes including cell division and organelle transport. KIFC2 encodes a 792 amino acid protein, which contains the conserved motor domain at the C-terminal end of the

## Target Details

protein and is most similar to members of the KAR3 family involved in cell division.

Molecular Weight: 90 kDa (MW of target protein)

## Application Details

Application Notes: WB: 1.25 µg/mL, IHC: 4-8 µg/mL  
Optimal conditions should be determined by the investigator.

Comment: KIFC2 Blocking Peptide, catalog no. 33R-9783, is also available for use as a blocking control in assays to test for specificity of this KIFC2 antibody

Restrictions: For Research Use only

## Handling

Format: Lyophilized

Reconstitution: Lyophilized powder. Add distilled water for a 1 mg/mL concentration of KIFC2 antibody in PBS

Concentration: Lot specific

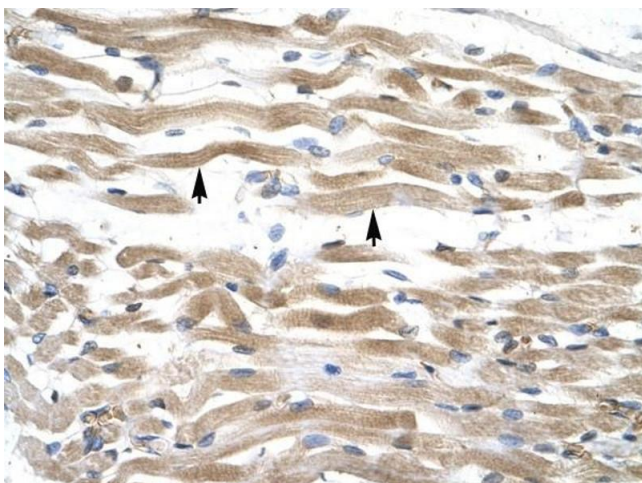
Buffer: PBS

Handling Advice: Avoid repeated freeze/thaw cycles.  
Dilute only prior to immediate use.

Storage: 4 °C/-20 °C

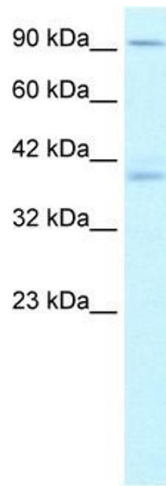
Storage Comment: Store at 2-8 °C for short periods. For longer periods of storage, store at -20 °C.

## Images



### Immunohistochemistry

**Image 1.** KIFC2 antibody was used for immunohistochemistry at a concentration of 4-8 µg/ml to stain skeletal muscle cells (indicated with arrows) in human muscle. Magnification is at 400X



### Western Blotting

**Image 2.** KIFC2 antibody used at 1.25 ug/ml to detect target protein.