

Datasheet for ABIN630209 **anti-FICD antibody (C-Term)**



[Go to Product page](#)

1 Image

Overview

Quantity:	100 µg
Target:	FICD
Binding Specificity:	C-Term
Reactivity:	Human, Mouse, Rat, Dog
Host:	Rabbit
Clonality:	Polyclonal
Conjugate:	This FICD antibody is un-conjugated
Application:	Western Blotting (WB)

Product Details

Immunogen:	FICD antibody was raised using the C terminal Of Ficd corresponding to a region with amino acids FAALAHYKLVYIHPFIDGNGRTSRLLMNLILMQAGYPPITIRKEQRSDYY
Specificity:	FICD antibody was raised against the C terminal Of Ficd
Purification:	Purified

Target Details

Target:	FICD
Alternative Name:	FICD (FICD Products)
Background:	FICD is an adenylyltransferase that mediates the addition of adenosine 5'-monophosphate (AMP) to specific residues of target proteins. It is able to inactivate Rho GTPases in vitro by adding AMP to RhoA, Rac and Cdc42. It is however unclear whether it inactivates GTPases in

Target Details

vivo and physiological substrates probably remain to be identified.

Molecular Weight: 52 kDa (MW of target protein)

Application Details

Application Notes: WB: 2.5 µg/mL
Optimal conditions should be determined by the investigator.

Comment: FICD Blocking Peptide, catalog no. 33R-2836, is also available for use as a blocking control in assays to test for specificity of this FICD antibody

Restrictions: For Research Use only

Handling

Format: Lyophilized

Reconstitution: Lyophilized powder. Add distilled water for a 1 mg/mL concentration of FICD antibody in PBS

Concentration: Lot specific

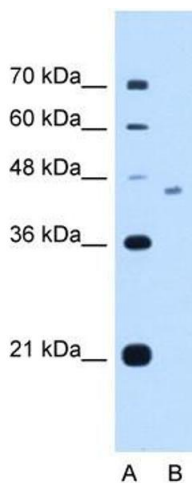
Buffer: PBS

Handling Advice: Avoid repeated freeze/thaw cycles.
Dilute only prior to immediate use.

Storage: 4 °C/-20 °C

Storage Comment: Store at 2-8 °C for short periods. For longer periods of storage, store at -20 °C.

Images



Western Blotting

Image 1. FICD antibody used at 2.5 µg/ml to detect target protein.