

Datasheet for ABIN630215 **anti-GNB1L antibody**

3 Images



[Go to Product page](#)

Overview

Quantity:	100 µg
Target:	GNB1L
Reactivity:	Human, Mouse, Rat
Host:	Rabbit
Clonality:	Polyclonal
Conjugate:	This GNB1L antibody is un-conjugated
Application:	Western Blotting (WB), Immunohistochemistry (IHC)

Product Details

Immunogen:	GNB1 L antibody was raised using a synthetic peptide corresponding to a region with amino acids RVFHWRTMQPLAVLAFHSAAVQCVAFTADGLLAAGSKDQRISLWSLYPRA
Purification:	Purified

Target Details

Target:	GNB1L
Alternative Name:	GNB1L (GNB1L Products)
Background:	GNB1L is a G-protein beta-subunit-like polypeptide which is a member of the WD repeat protein family. WD repeats are minimally conserved regions of approximately 40 amino acids typically bracketed by gly-his and trp-asp (GH-WD), which may facilitate formation of heterotrimeric or multiprotein complexes. Members of this family are involved in a variety of cellular processes, including cell cycle progression, signal transduction, apoptosis, and gene regulation. This

Target Details

protein contains 6 WD repeats and is highly expressed in the heart. Therefore, this gene may contribute to the etiology of those disorders.

Molecular Weight: 36 kDa (MW of target protein)

Application Details

Application Notes: WB: 2.5 µg/mL, IHC: 4-8 µg/mL
Optimal conditions should be determined by the investigator.

Comment: GNB1L Blocking Peptide, catalog no. 33R-8245, is also available for use as a blocking control in assays to test for specificity of this GNB1L antibody

Restrictions: For Research Use only

Handling

Format: Lyophilized

Reconstitution: Lyophilized powder. Add distilled water for a 1 mg/mL concentration of GNB0 antibody in PBS

Concentration: Lot specific

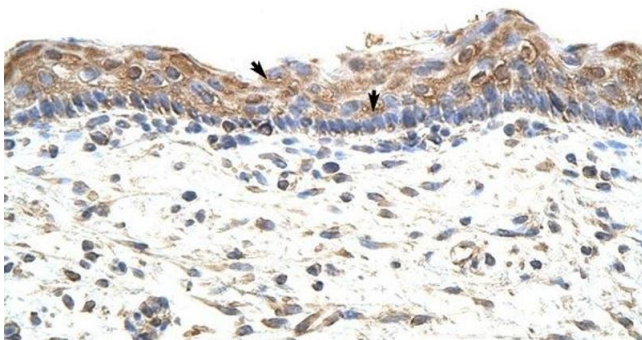
Buffer: PBS

Handling Advice: Avoid repeated freeze/thaw cycles.

Storage: 4 °C/-20 °C

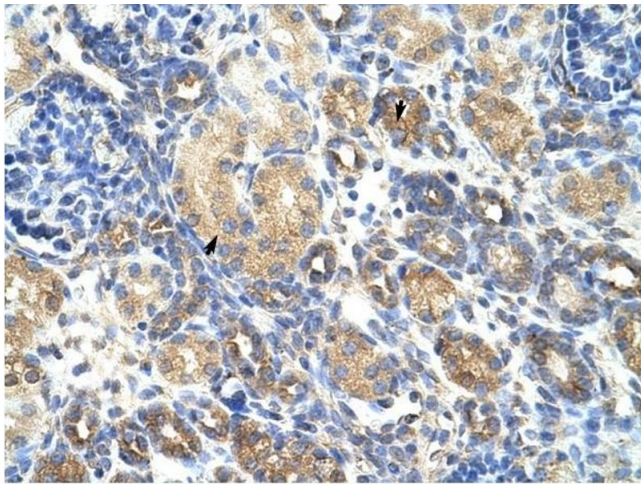
Storage Comment: Store at 2-8 °C for short periods. For longer periods of storage, store at -20 °C.

Images



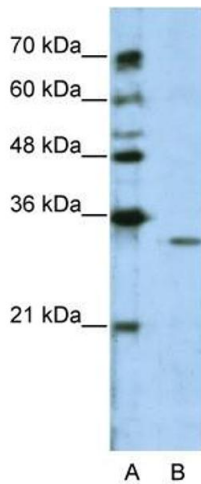
Immunohistochemistry

Image 1. GNB1L antibody was used for immunohistochemistry at a concentration of 4-8 µg/ml to stain Squamous epithelial cells (arrows) in Human Skin. Magnification is at 400X



Immunohistochemistry

Image 2. GNB1L antibody was used for immunohistochemistry at a concentration of 4-8 ug/ml to stain Epithelial cells of renal tubule (arrows) in Human Kidney. Magnification is at 400X.



Western Blotting

Image 3. GNB1L antibody used at 2.5 ug/ml to detect target protein.