

## Datasheet for ABIN630218 **anti-NSMCE1 antibody**



[Go to Product page](#)

### 1 Image

#### Overview

Quantity:	100 µg
Target:	NSMCE1
Reactivity:	Human, Rat, Mouse
Host:	Rabbit
Clonality:	Polyclonal
Conjugate:	This NSMCE1 antibody is un-conjugated
Application:	Western Blotting (WB)

#### Product Details

Immunogen:	NSMCE1 antibody was raised using a synthetic peptide corresponding to a region with amino acids RPIYALVNLATTTSISKMATDFAENELDLFRKALELIIDSETGFASSTNIL
Purification:	Purified

#### Target Details

Target:	NSMCE1
Alternative Name:	NSMCE1 ( <a href="#">NSMCE1 Products</a> )
Background:	NSMCE1 is a probable component of the SMC5-SMC6 complex, a complex involved in DNA double-strand breaks by homologous recombination. The complex may promote sister chromatid homologous recombination by recruiting the SMC1-SMC3 cohesin complex to double-strand breaks.
Molecular Weight:	28 kDa (MW of target protein)

## Target Details

---

Pathways: [Positive Regulation of Response to DNA Damage Stimulus](#)

## Application Details

---

Application Notes: WB: 2.5 µg/mL  
Optimal conditions should be determined by the investigator.

Comment: NSMCE1 Blocking Peptide, catalog no. 33R-8094, is also available for use as a blocking control in assays to test for specificity of this NSMCE1 antibody

Restrictions: For Research Use only

## Handling

---

Format: Lyophilized

Reconstitution: Lyophilized powder. Add distilled water for a 1 mg/mL concentration of NSMCE1 antibody in PBS

Concentration: Lot specific

Buffer: PBS

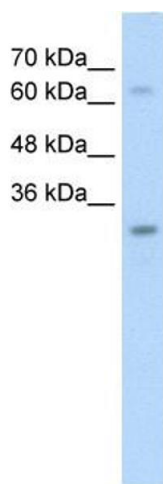
Handling Advice: Avoid repeated freeze/thaw cycles.

Storage: 4 °C/-20 °C

Storage Comment: Store at 2-8 °C for short periods. For longer periods of storage, store at -20 °C.

## Images

---



### Western Blotting

**Image 1.** NSMCE1 antibody used at 2.5 ug/ml to detect target protein.