

Datasheet for ABIN630222
anti-RGS antibody (N-Term)



[Go to Product page](#)

2 Images

Overview

Quantity:	100 µg
Target:	RGS
Binding Specificity:	N-Term
Reactivity:	Human, Mouse, Rat, Dog
Host:	Rabbit
Clonality:	Polyclonal
Conjugate:	This RGS antibody is un-conjugated
Application:	Western Blotting (WB), Immunohistochemistry (IHC)

Product Details

Immunogen:	RGS9 antibody was raised using the N terminal of RGS9 corresponding to a region with amino acids MYYQQALMRSTVKSSVSLGGIVKYSEQFSSNDAIMSGCLPSNPWITDDTQ
Specificity:	RGS9 antibody was raised against the N terminal of RGS9
Purification:	Purified

Target Details

Target:	RGS
Alternative Name:	RGS9 (RGS Products)
Background:	RGS9 is a member of the RGS family of signaling proteins that suppress the activity of G proteins by promoting their deactivation.

Target Details

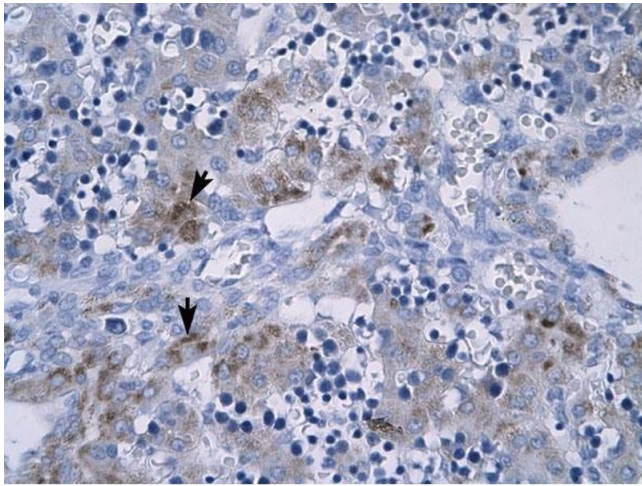
Molecular Weight:	49 kDa (MW of target protein)
Pathways:	Myometrial Relaxation and Contraction , Regulation of G-Protein Coupled Receptor Protein Signaling , Phototransduction

Application Details

Application Notes:	WB: 2 µg/mL, IHC: 4-8 µg/mL Optimal conditions should be determined by the investigator.
Comment:	RGS9 Blocking Peptide, catalog no. 33R-6633, is also available for use as a blocking control in assays to test for specificity of this RGS9 antibody
Restrictions:	For Research Use only

Handling

Format:	Lyophilized
Reconstitution:	Lyophilized powder. Add distilled water for a 1 mg/mL concentration of RGS9 antibody in PBS
Concentration:	Lot specific
Buffer:	PBS
Handling Advice:	Avoid repeated freeze/thaw cycles. Dilute only prior to immediate use.
Storage:	4 °C/-20 °C
Storage Comment:	Store at 2-8 °C for short periods. For longer periods of storage, store at -20 °C.



Immunohistochemistry

Image 1. RGS9 antibody was used for immunohistochemistry at a concentration of 4-8 ug/ml to stain Hepatocytes (arrows) in Human Liver. Magnification is at 400X.



Western Blotting

Image 2. RGS9 antibody used at 2 ug/ml to detect target protein.