

Datasheet for ABIN630223
anti-SOCS1 antibody (N-Term)



[Go to Product page](#)

2 Images

Overview

Quantity:	100 µg
Target:	SOCS1
Binding Specificity:	N-Term
Reactivity:	Human, Mouse, Rat, Dog
Host:	Rabbit
Clonality:	Polyclonal
Conjugate:	This SOCS1 antibody is un-conjugated
Application:	Western Blotting (WB), Immunohistochemistry (IHC)

Product Details

Immunogen:	SOCS1 antibody was raised using the N terminal of SOCS1 corresponding to a region with amino acids RRPEPSSSSSSPAAPARPRPCPAVPAPAPGDTHFRTRFRSHADYRRITRA
Specificity:	SOCS1 antibody was raised against the N terminal of SOCS1
Purification:	Purified

Target Details

Target:	SOCS1
Alternative Name:	SOCS1 (SOCS1 Products)
Background:	SOCS1 is a member of the STAT-induced STAT inhibitor (SSI), also known as suppressor of cytokine signaling (SOCS), family. SSI family members are cytokine-inducible negative regulators of cytokine signaling. SOCS1 functions downstream of cytokine receptors, and takes

Target Details

part in a negative feedback loop to attenuate cytokine signaling. Knockout studies in mice suggested the role of its gene as a modulator of IFN-gamma action, which is required for normal postnatal growth and survival.

Molecular Weight: 23 kDa (MW of target protein)

Pathways: [JAK-STAT Signaling](#), [Interferon-gamma Pathway](#), [TLR Signaling](#), [Response to Growth Hormone Stimulus](#)

Application Details

Application Notes: WB: 1.25 µg/mL, IHC: 4-8 µg/mL
Optimal conditions should be determined by the investigator.

Comment: SOCS1 Blocking Peptide, catalog no. 33R-8152, is also available for use as a blocking control in assays to test for specificity of this SOCS1 antibody

Restrictions: For Research Use only

Handling

Format: Lyophilized

Reconstitution: Lyophilized powder. Add distilled water for a 1 mg/mL concentration of SOCS1 antibody in PBS

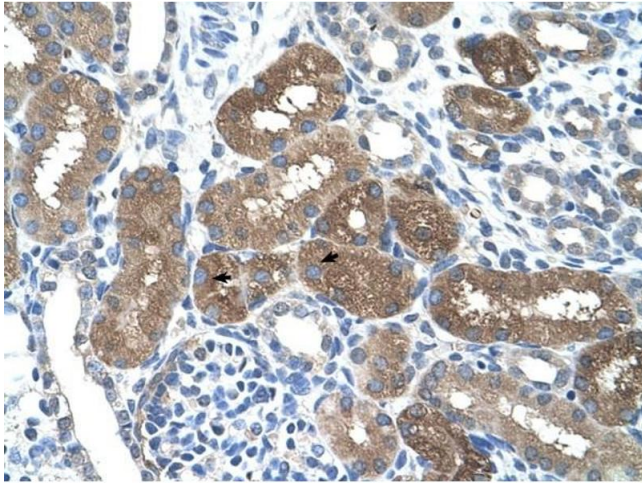
Concentration: Lot specific

Buffer: PBS

Handling Advice: Avoid repeated freeze/thaw cycles.
Dilute only prior to immediate use.

Storage: 4 °C/-20 °C

Storage Comment: Store at 2-8 °C for short periods. For longer periods of storage, store at -20 °C.



Immunohistochemistry

Image 1. SOCS1 antibody was used for immunohistochemistry at a concentration of 4-8 ug/ml to stain Epithelial cells of renal tubule (arrows) in Human Kidney. Magnification is at 400X



Western Blotting

Image 2. SOCS1 antibody used at 1.25 ug/ml to detect target protein.