

Datasheet for ABIN630228 **anti-APCS antibody (N-Term)**



[Go to Product page](#)

2 Images

Overview

Quantity:	100 µg
Target:	APCS
Binding Specificity:	N-Term
Reactivity:	Human
Host:	Rabbit
Clonality:	Polyclonal
Conjugate:	This APCS antibody is un-conjugated
Application:	Western Blotting (WB), Immunohistochemistry (IHC)

Product Details

Immunogen:	APCS antibody was raised using the N terminal of APCS corresponding to a region with amino acids NFTLCFRAYSDLRAYSLSFSYNTQGRDNELLVYKERVGEYSLYIGRHKVT
Specificity:	APCS antibody was raised against the N terminal of APCS
Purification:	Purified

Target Details

Target:	APCS
Alternative Name:	APCS (APCS Products)
Background:	APCS is a glycoprotein, belonging to the pentraxin family of proteins, which has a characteristic pentameric organization. These family members have considerable sequence homology which is thought to be the result of gene duplication. The binding of the protein to proteins in the

Target Details

pathological amyloid cross-beta fold suggests its possible role as a chaperone. This protein is also thought to control the degradation of chromatin. It has been demonstrated that this protein binds to apoptotic cells at an early stage, which raises the possibility that it is involved in dealing with apoptotic cells in vivo.

Molecular Weight: 25 kDa (MW of target protein)

Application Details

Application Notes: WB: 1.25 µg/mL, IHC: 4-8 µg/mL
Optimal conditions should be determined by the investigator.

Comment: APCS Blocking Peptide, catalog no. 33R-6691, is also available for use as a blocking control in assays to test for specificity of this APCS antibody

Restrictions: For Research Use only

Handling

Format: Lyophilized

Reconstitution: Lyophilized powder. Add distilled water for a 1 mg/mL concentration of APCS antibody in PBS

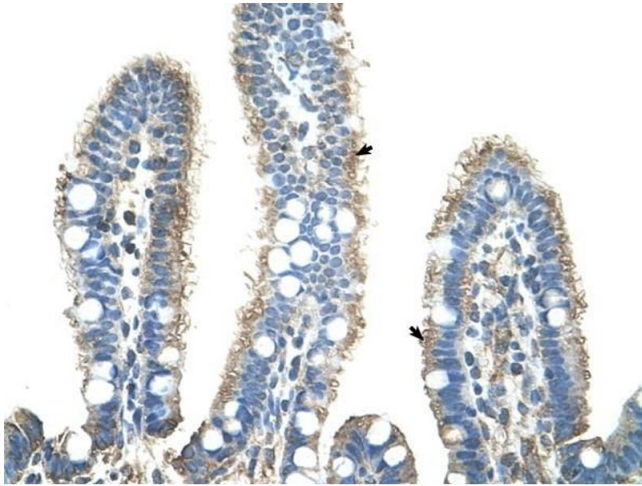
Concentration: Lot specific

Buffer: PBS

Handling Advice: Avoid repeated freeze/thaw cycles.
Dilute only prior to immediate use.

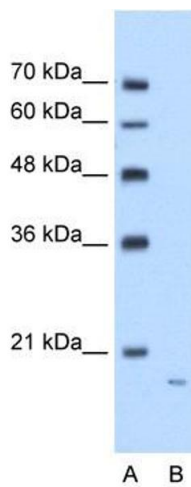
Storage: 4 °C/-20 °C

Storage Comment: Store at 2-8 °C for short periods. For longer periods of storage, store at -20 °C.



Immunohistochemistry

Image 1. APCS antibody was used for immunohistochemistry at a concentration of 4-8 ug/ml to stain Epithelial cells of intestinal villus (arrows) in Human Intestine. Magnification is at 400X



Western Blotting

Image 2. APCS antibody used at 1.25 ug/ml to detect target protein.