

Datasheet for ABIN630230

anti-Complement C2 antibody (Middle Region)[Go to Product page](#)**1** Image

Overview

Quantity:	100 µg
Target:	Complement C2
Binding Specificity:	Middle Region
Reactivity:	Human, Rat, Mouse, Dog, Zebrafish (Danio rerio)
Host:	Rabbit
Clonality:	Polyclonal
Conjugate:	This Complement C2 antibody is un-conjugated
Application:	Western Blotting (WB)

Product Details

Immunogen:	Complement C2 antibody was raised using the middle region of C2 corresponding to a region with amino acids INQKRNDYLDIYAIGVGKLDVDWRELNELGSKKDDGERHAFILQDTKALHQ
Specificity:	Complement C2 antibody was raised against the middle region of C2
Purification:	Purified

Target Details

Target:	Complement C2
Abstract:	Complement C2 Products
Background:	Component C2 is part of the classical pathway of complement system. Activated C1 cleaves C2 into C2a and C2b. C2a leads to activation of C3. Deficiency of C2 has been reported to associated with certain autoimmune diseases.

Target Details

Molecular Weight: 83 kDa (MW of target protein)

Application Details

Application Notes: WB: 1.25 µg/mL
Optimal conditions should be determined by the investigator.

Comment: Complement C2 Blocking Peptide, catalog no. 33R-4079, is also available for use as a blocking control in assays to test for specificity of this Complement C2 antibody

Restrictions: For Research Use only

Handling

Format: Lyophilized

Reconstitution: Lyophilized powder. Add distilled water for a 1 mg/mL concentration of C2 antibody in PBS

Concentration: Lot specific

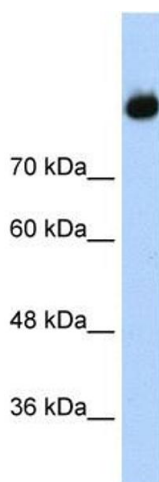
Buffer: PBS

Handling Advice: Avoid repeated freeze/thaw cycles.
Dilute only prior to immediate use.

Storage: 4 °C/-20 °C

Storage Comment: Store at 2-8 °C for short periods. For longer periods of storage, store at -20 °C.

Images



Western Blotting

Image 1. Complement C2 antibody used at 1.25 ug/ml to detect target protein.