

Datasheet for ABIN630234
anti-ZDHHC13 antibody (N-Term)



[Go to Product page](#)

2 Images

Overview

Quantity:	100 µg
Target:	ZDHHC13
Binding Specificity:	N-Term
Reactivity:	Human, Mouse, Rat
Host:	Rabbit
Clonality:	Polyclonal
Conjugate:	This ZDHHC13 antibody is un-conjugated
Application:	Western Blotting (WB), Immunohistochemistry (IHC)

Product Details

Immunogen:	ZDHHC13 antibody was raised using the N terminal of ZDHHC13 corresponding to a region with amino acids MVILLLLQHGDPTLIDGEGFSSIH LAVLFQHMPIIAYLISKGQSVNMTDV
Specificity:	ZDHHC13 antibody was raised against the N terminal of ZDHHC13
Purification:	Purified

Target Details

Target:	ZDHHC13
Alternative Name:	ZDHHC13 (ZDHHC13 Products)
Background:	ZDHHC13 may be involved in the NF-kappa-B signaling pathway.
Molecular Weight:	54 kDa (MW of target protein)

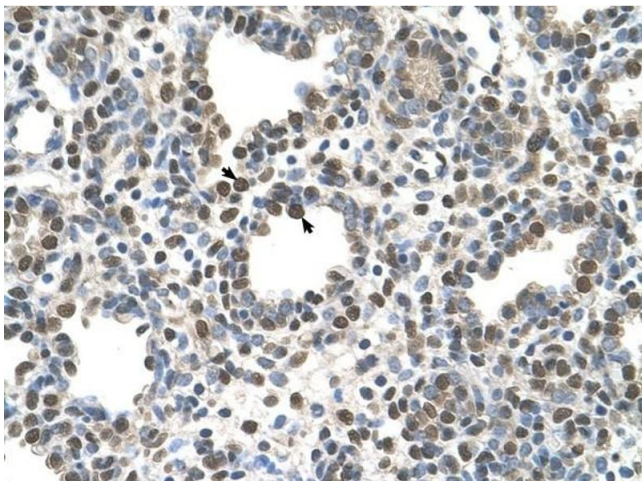
Application Details

Application Notes:	WB: 1.25 µg/mL, IHC: 4-8 µg/mL Optimal conditions should be determined by the investigator.
Comment:	ZDHHC13 Blocking Peptide, catalog no. 33R-6586, is also available for use as a blocking control in assays to test for specificity of this ZDHHC13 antibody
Restrictions:	For Research Use only

Handling

Format:	Lyophilized
Reconstitution:	Lyophilized powder. Add distilled water for a 1 mg/mL concentration of ZDHHC13 antibody in PBS
Concentration:	Lot specific
Buffer:	PBS
Handling Advice:	Avoid repeated freeze/thaw cycles. Dilute only prior to immediate use.
Storage:	4 °C/-20 °C
Storage Comment:	Store at 2-8 °C for short periods. For longer periods of storage, store at -20 °C.

Images



Immunohistochemistry

Image 1. ZDHHC13 antibody was used for immunohistochemistry at a concentration of 4-8 ug/ml to stain Alveolar cells (arrows) in Human Lung. Magnification is at 400X



Western Blotting

Image 2. ZDHHC13 antibody used at 1.25 ug/ml to detect target protein.