

Datasheet for ABIN630237  
**anti-MGST2 antibody (N-Term)**



[Go to Product page](#)

3 Images

## Overview

Quantity:	100 µg
Target:	MGST2
Binding Specificity:	N-Term
Reactivity:	Human
Host:	Rabbit
Clonality:	Polyclonal
Conjugate:	This MGST2 antibody is un-conjugated
Application:	Western Blotting (WB), Immunohistochemistry (IHC)

## Product Details

Immunogen:	MGST2 antibody was raised using the N terminal of MGST2 corresponding to a region with amino acids MAGNSILLAAVSILSACQSYFALQVGKARLKYKVTPPAVTGSPEFERVF
Specificity:	MGST2 antibody was raised against the N terminal of MGST2
Purification:	Purified

## Target Details

Target:	MGST2
Alternative Name:	MGST2 ( <a href="#">MGST2 Products</a> )
Background:	The MAPEG (Membrane Associated Proteins in Eicosanoid and Glutathione metabolism) family consists of six human proteins, several of which are involved in the production of leukotrienes and prostaglandin E, important mediators of inflammation. MGST2 is a protein which catalyzes

## Target Details

the conjugation of leukotriene A4 and reduced glutathione to produce leukotriene C4.

Molecular Weight: 16 kDa (MW of target protein)

## Application Details

Application Notes: WB: 1.25 µg/mL, IHC: 4-8 µg/mL  
Optimal conditions should be determined by the investigator.

Comment: MGST2 Blocking Peptide, catalog no. 33R-5664, is also available for use as a blocking control in assays to test for specificity of this MGST2 antibody

Restrictions: For Research Use only

## Handling

Format: Lyophilized

Reconstitution: Lyophilized powder. Add distilled water for a 1 mg/mL concentration of MGST2 antibody in PBS

Concentration: Lot specific

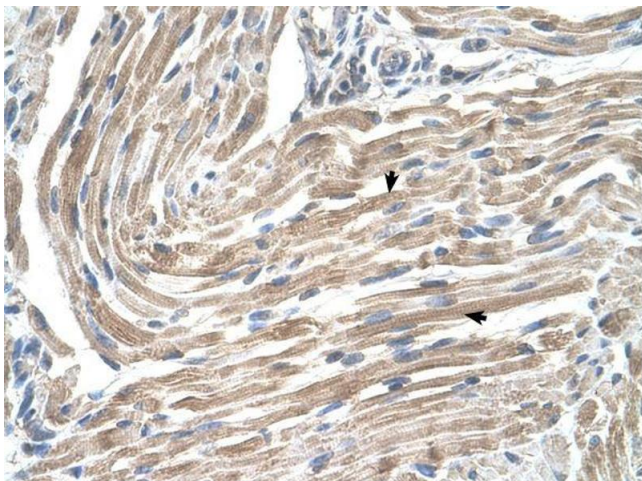
Buffer: PBS

Handling Advice: Avoid repeated freeze/thaw cycles.  
Dilute only prior to immediate use.

Storage: 4 °C/-20 °C

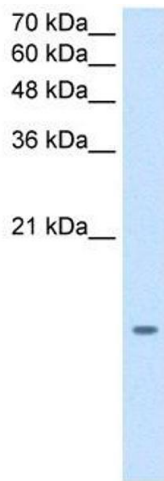
Storage Comment: Store at 2-8 °C for short periods. For longer periods of storage, store at -20 °C.

## Images



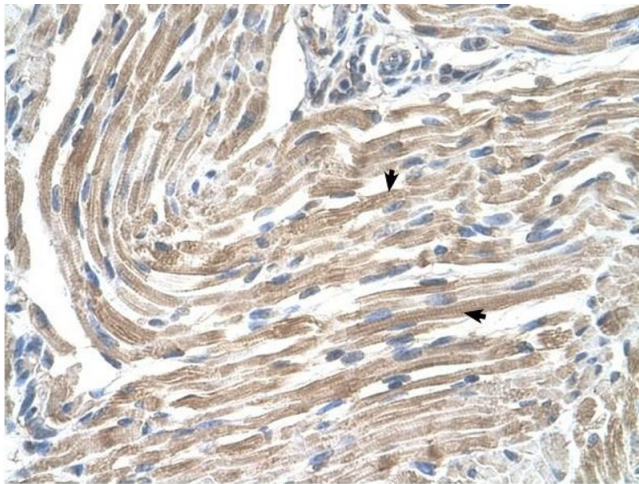
### Immunohistochemistry

**Image 1.** MGST2 antibody was used for immunohistochemistry at a concentration of 4-8 µg/ml. Magnification is at 400X



### Western Blotting

**Image 2.** MGST2 antibody used at 1.25 ug/ml to detect target protein.



### Immunohistochemistry

**Image 3.** MGST2 antibody was used for immunohistochemistry at a concentration of 4-8 ug/ml to stain Skeletal muscle cells (arrows) in Human Muscle. Magnification is at 400X