

Datasheet for ABIN630244
anti-IGSF1 antibody (N-Term)



[Go to Product page](#)

2 Images

Overview

| | |
|----------------------|---|
| Quantity: | 100 µg |
| Target: | IGSF1 (INHBP) |
| Binding Specificity: | N-Term |
| Reactivity: | Human |
| Host: | Rabbit |
| Clonality: | Polyclonal |
| Conjugate: | This IGSF1 antibody is un-conjugated |
| Application: | Western Blotting (WB), Immunohistochemistry (IHC) |

Product Details

| | |
|---------------|--|
| Immunogen: | IGSF1 antibody was raised using the N terminal of IGSF1 corresponding to a region with amino acids LCHGWLQDLVFMFLFKEGYAEPVDYQVPTGTMAIFSIDNLTPEDEGVYICR |
| Specificity: | IGSF1 antibody was raised against the N terminal of IGSF1 |
| Purification: | Purified |

Target Details

| | |
|-------------------|--|
| Target: | IGSF1 (INHBP) |
| Alternative Name: | IGSF1 (INHBP Products) |
| Background: | Members of the immunoglobulin (Ig) superfamily, which includes IGSF1, have a variety of functions, but all appear to play a role in cell recognition and the regulation of cell behavior. Members of the immunoglobulin (Ig) superfamily, which includes IGSF1, have a variety |

Target Details

of functions, but all appear to play a role in cell recognition and the regulation of cell behavior.

Molecular Weight: 27 kDa (MW of target protein)

Application Details

Application Notes: WB: 1.25 µg/mL, IHC: 4-8 µg/mL
Optimal conditions should be determined by the investigator.

Comment: IGSF1 Blocking Peptide, catalog no. 33R-4821, is also available for use as a blocking control in assays to test for specificity of this IGSF1 antibody

Restrictions: For Research Use only

Handling

Format: Lyophilized

Reconstitution: Lyophilized powder. Add distilled water for a 1 mg/mL concentration of IGSF1 antibody in PBS

Concentration: Lot specific

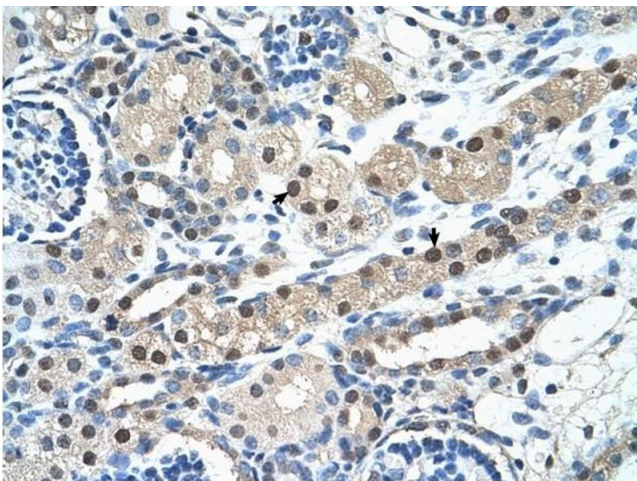
Buffer: PBS

Handling Advice: Avoid repeated freeze/thaw cycles.
Dilute only prior to immediate use.

Storage: 4 °C/-20 °C

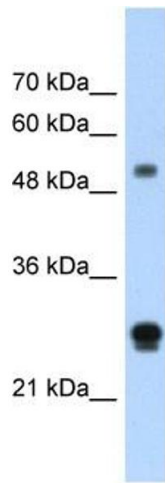
Storage Comment: Store at 2-8 °C for short periods. For longer periods of storage, store at -20 °C.

Images



Immunohistochemistry

Image 1. IGSF1 antibody was used for immunohistochemistry at a concentration of 4-8 µg/ml to stain Epithelial cells of renal tubule (arrows) in Human Kidney. Magnification is at 400X



Western Blotting

Image 2. IGSF1 antibody used at 1.25 ug/ml to detect target protein.