

Datasheet for ABIN630254

**anti-Claudin 13 (CLDN13) (C-Term) antibody**[Go to Product page](#)**1** Image

## Overview

Quantity:	100 µg
Target:	Claudin 13 (CLDN13)
Binding Specificity:	C-Term
Reactivity:	Mouse
Host:	Rabbit
Clonality:	Polyclonal
Conjugate:	Un-conjugated
Application:	Western Blotting (WB)

## Product Details

Immunogen:	Claudin 13 antibody was raised using the C terminal Of Cldn13 corresponding to a region with amino acids SSLSLAWTSSLLLLLGGILLCVNIPVCRDFPRCIETPSARPSGANNDTLD
Specificity:	Claudin 13 antibody was raised against the C terminal Of Cldn13
Purification:	Purified

## Target Details

Target:	Claudin 13 (CLDN13)
Alternative Name:	Claudin 13 ( <a href="#">CLDN13 Products</a> )
Background:	CLDN13 is a member of claudin family. It is a four-transmembrane protein with WWCC motif, defined by W-X(17-22)-W-X(2)-C-X(8-10)-C.

## Target Details

---

Molecular Weight: 23 kDa (MW of target protein)

## Application Details

---

Application Notes: WB: 1 µg/mL

Optimal conditions should be determined by the investigator.

Comment: Claudin 13 Blocking Peptide, catalog no. 33R-8827, is also available for use as a blocking control in assays to test for specificity of this Claudin 13 antibody

Restrictions: For Research Use only

## Handling

---

Format: Lyophilized

Reconstitution: Lyophilized powder. Add distilled water for a 1 mg/mL concentration of CLDN13 antibody in PBS

Concentration: Lot specific

Buffer: PBS

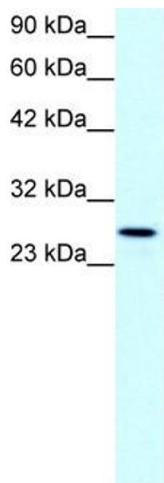
Handling Advice: Avoid repeated freeze/thaw cycles.  
Dilute only prior to immediate use.

Storage: 4 °C/-20 °C

Storage Comment: Store at 2-8 °C for short periods. For longer periods of storage, store at -20 °C.

## Images

---



### Western Blotting

**Image 1.** Claudin 13 antibody used at 1 ug/ml to detect target protein.