

Datasheet for ABIN630257  
**anti-GJB1 antibody (C-Term)**



[Go to Product page](#)

2 Images

## Overview

Quantity:	100 µg
Target:	GJB1
Binding Specificity:	C-Term
Reactivity:	Human, Rat, Mouse, Dog
Host:	Rabbit
Clonality:	Polyclonal
Conjugate:	This GJB1 antibody is un-conjugated
Application:	Western Blotting (WB), Immunohistochemistry (IHC)

## Product Details

Immunogen:	GJB1 antibody was raised using the C terminal of GJB1 corresponding to a region with amino acids GFGHRLSPEYKQNEINKLLSEQDGSLKDILRRSPGTGAGLAEKSDRCSAC
Specificity:	GJB1 antibody was raised against the C terminal of GJB1
Purification:	Purified

## Target Details

Target:	GJB1
Alternative Name:	GJB1 ( <a href="#">GJB1 Products</a> )
Background:	This gene encodes for a Connexin 32 protein. A large Charcot-Marie-Tooth disease family has been identified with a novel mutation in the Cx32 P2 promoter region at position -526bp. Cx32 mutants that are associated with a CNS phenotype may have toxic effects in oligodendrocytes.

## Target Details

Molecular Weight: 31 kDa (MW of target protein)

Pathways: [Cell-Cell Junction Organization](#)

## Application Details

Application Notes: WB: 2.5 µg/mL, IHC: 4-8 µg/mL  
Optimal conditions should be determined by the investigator.

Comment: GJB1 Blocking Peptide, catalog no. 33R-3256, is also available for use as a blocking control in assays to test for specificity of this GJB1 antibody

Restrictions: For Research Use only

## Handling

Format: Lyophilized

Reconstitution: Lyophilized powder. Add distilled water for a 1 mg/mL concentration of GJB1 antibody in PBS

Concentration: Lot specific

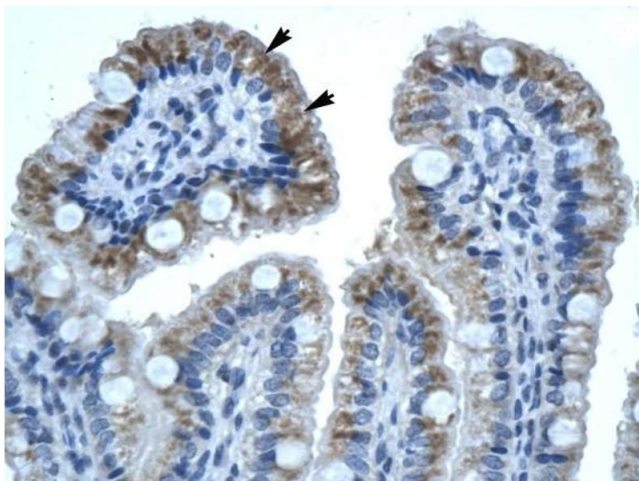
Buffer: PBS

Handling Advice: Avoid repeated freeze/thaw cycles.  
Dilute only prior to immediate use.

Storage: 4 °C/-20 °C

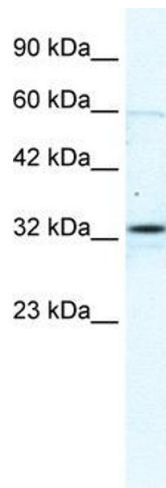
Storage Comment: Store at 2-8 °C for short periods. For longer periods of storage, store at -20 °C.

## Images



### Immunohistochemistry

**Image 1.** GJB1 antibody was used for immunohistochemistry at a concentration of 4-8 µg/ml to stain Epithelial cells of intestinal villus (Indicated with Arrows) in Human Intestine. Magnification is at 400X



### Western Blotting

**Image 2.** GJB1 antibody used at 2.5 ug/ml to detect target protein.