

Datasheet for ABIN630258  
**anti-GJB2 antibody (N-Term)**



[Go to Product page](#)

1 Image

## Overview

Quantity:	100 µg
Target:	GJB2
Binding Specificity:	N-Term
Reactivity:	Human, Dog
Host:	Rabbit
Clonality:	Polyclonal
Conjugate:	This GJB2 antibody is un-conjugated
Application:	Western Blotting (WB)

## Product Details

Immunogen:	GJB2 antibody was raised using the N terminal of GJB2 corresponding to a region with amino acids STPALLVAMHVAYRRHEKKRKFGEIKSEFKDIEEIKTQKVRIEGLWW
Specificity:	GJB2 antibody was raised against the N terminal of GJB2
Purification:	Purified

## Target Details

Target:	GJB2
Alternative Name:	GJB2 ( <a href="#">GJB2 Products</a> )
Background:	Gap junctions were first characterized by electron microscopy as regionally specialized structures on plasma membranes of contacting adherent cells. These structures were shown to consist of cell-to-cell channels. Proteins, called connexins, purified from fractions of enriched

## Target Details

---

gap junctions from different tissues differ. The connexins are designated by their molecular mass. Another system of nomenclature divides gap junction proteins into 2 categories, alpha and beta, according to sequence similarities at the nucleotide and amino acid levels. For example, CX43 is designated alpha-1 gap junction protein, whereas CX32 and CX26 are called beta-1 and beta-2 gap junction proteins, respectively. This nomenclature emphasizes that CX32 and CX26 are more homologous to each other than either of them is to CX43.

Molecular Weight: 25 kDa (MW of target protein)

Pathways: [Sensory Perception of Sound, Cell-Cell Junction Organization](#)

## Application Details

---

Application Notes: WB: 1.25 µg/mL  
Optimal conditions should be determined by the investigator.

Comment: GJB2 Blocking Peptide, catalog no. 33R-8880, is also available for use as a blocking control in assays to test for specificity of this GJB2 antibody

Restrictions: For Research Use only

## Handling

---

Format: Lyophilized

Reconstitution: Lyophilized powder. Add distilled water for a 1 mg/mL concentration of GJB2 antibody in PBS

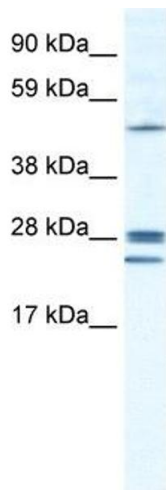
Concentration: Lot specific

Buffer: PBS

Handling Advice: Avoid repeated freeze/thaw cycles.  
Dilute only prior to immediate use.

Storage: 4 °C/-20 °C

Storage Comment: Store at 2-8 °C for short periods. For longer periods of storage, store at -20 °C.



### Western Blotting

**Image 1.** GJB2 antibody used at 1.25 ug/ml to detect target protein.