

Datasheet for ABIN630266
anti-Claudin 17 antibody (Middle Region)



[Go to Product page](#)

3 Images

Overview

| | |
|----------------------|---|
| Quantity: | 100 µg |
| Target: | Claudin 17 (CLDN17) |
| Binding Specificity: | Middle Region |
| Reactivity: | Human, Mouse, Rat, Dog |
| Host: | Rabbit |
| Clonality: | Polyclonal |
| Conjugate: | This Claudin 17 antibody is un-conjugated |
| Application: | Western Blotting (WB), Immunohistochemistry (IHC) |

Product Details

| | |
|---------------|---|
| Immunogen: | Claudin 17 antibody was raised using the middle region of CLDN17 corresponding to a region with amino acids KQVQCTGSNERAKAYLLGTSGVLFILTGIFVLIPVSWTANIIIRDFFYNPA |
| Specificity: | Claudin 17 antibody was raised against the middle region of CLDN17 |
| Purification: | Purified |

Target Details

| | |
|-------------------|---|
| Target: | Claudin 17 (CLDN17) |
| Alternative Name: | Claudin 17 (CLDN17 Products) |
| Background: | CLDN17, clustered with CLDN8 at human chromosome 21q22.11, is a four-transmembrane protein with WWCC motif, defined by W-X(17-22)-W-X(2)-C-X(8-10)-C. |

Target Details

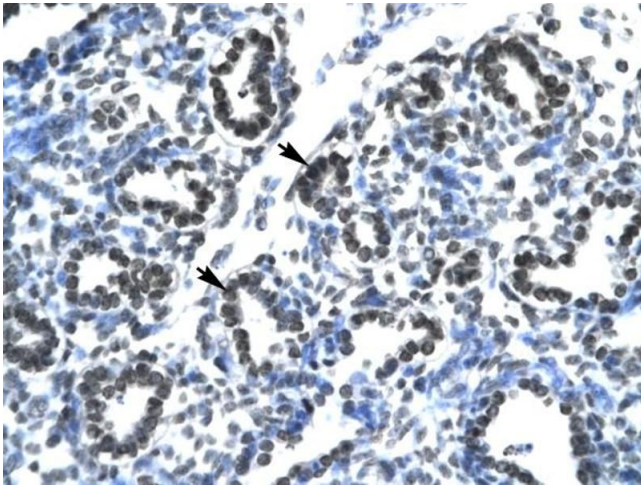
| | |
|-------------------|--|
| Molecular Weight: | 25 kDa (MW of target protein) |
| Pathways: | Cell-Cell Junction Organization, Hepatitis C |

Application Details

| | |
|--------------------|--|
| Application Notes: | WB: 2 µg/mL, IHC: 4-8 µg/mL Optimal conditions should be determined by the investigator. |
| Comment: | Claudin 17 Blocking Peptide, catalog no. 33R-4616, is also available for use as a blocking control in assays to test for specificity of this Claudin 17 antibody |
| Restrictions: | For Research Use only |

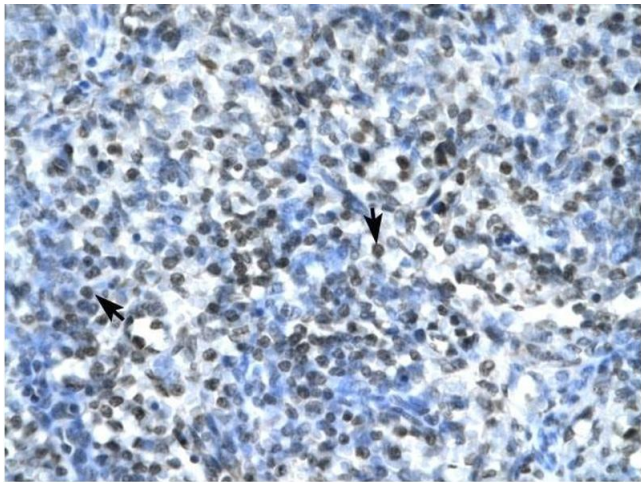
Handling

| | |
|------------------|---|
| Format: | Lyophilized |
| Reconstitution: | Lyophilized powder. Add distilled water for a 1 mg/mL concentration of CLDN17 antibody in PBS |
| Concentration: | Lot specific |
| Buffer: | PBS |
| Handling Advice: | Avoid repeated freeze/thaw cycles. Dilute only prior to immediate use. |
| Storage: | 4 °C/-20 °C |
| Storage Comment: | Store at 2-8 °C for short periods. For longer periods of storage, store at -20 °C. |



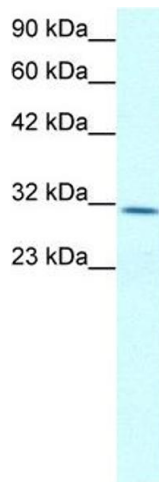
Immunohistochemistry

Image 1. Claudin 17 antibody was used for immunohistochemistry at a concentration of 4-8 ug/ml to stain Alveolar cells (arrows) in Human Lung. Magnification is at 400X



Immunohistochemistry

Image 2. Claudin 17 antibody was used for immunohistochemistry at a concentration of 4-8 ug/ml to stain Spleen cells (arrows) in Human Spleen. Magnification is at 400X.



Western Blotting

Image 3. Claudin 17 antibody used at 2 ug/ml to detect target protein.