

Datasheet for ABIN630267
anti-Claudin 9 antibody (C-Term)



[Go to Product page](#)

1 Image

Overview

Quantity:	100 µg
Target:	Claudin 9 (CLDN9)
Binding Specificity:	C-Term
Reactivity:	Human, Mouse, Rat, Dog
Host:	Rabbit
Clonality:	Polyclonal
Conjugate:	This Claudin 9 antibody is un-conjugated
Application:	Western Blotting (WB)

Product Details

Immunogen:	Claudin 9 antibody was raised using the C terminal of CLDN9 corresponding to a region with amino acids WAAAALLMLGGLLCCTCPPPQVERPRGPRLGYSIPSRSGASGLDKRDYV
Specificity:	Claudin 9 antibody was raised against the C terminal of CLDN9
Purification:	Purified

Target Details

Target:	Claudin 9 (CLDN9)
Alternative Name:	Claudin 9 (CLDN9 Products)
Background:	CLDN9 is a member of claudin family. It is a four-transmembrane protein with WWCC motif, defined by W-X(17-22)-W-X(2)-C-X(8-10)-C.

Target Details

Molecular Weight:	24 kDa (MW of target protein)
Pathways:	Cell-Cell Junction Organization , Hepatitis C

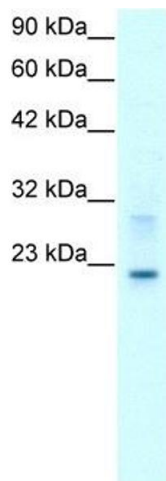
Application Details

Application Notes:	WB: 2 µg/mL Optimal conditions should be determined by the investigator.
Comment:	Claudin 9 Blocking Peptide, catalog no. 33R-9930, is also available for use as a blocking control in assays to test for specificity of this Claudin 9 antibody
Restrictions:	For Research Use only

Handling

Format:	Lyophilized
Reconstitution:	Lyophilized powder. Add distilled water for a 1 mg/mL concentration of CLDN9 antibody in PBS
Concentration:	Lot specific
Buffer:	PBS
Handling Advice:	Avoid repeated freeze/thaw cycles. Dilute only prior to immediate use.
Storage:	4 °C/-20 °C
Storage Comment:	Store at 2-8 °C for short periods. For longer periods of storage, store at -20 °C.

Images



Western Blotting

Image 1. Claudin 9 antibody used at 2 ug/ml to detect target protein.