

Datasheet for ABIN630268

anti-CLDN8 antibody (C-Term)[Go to Product page](#)**3** Images

Overview

Quantity:	100 µg
Target:	CLDN8
Binding Specificity:	C-Term
Reactivity:	Human
Host:	Rabbit
Clonality:	Polyclonal
Conjugate:	This CLDN8 antibody is un-conjugated
Application:	Western Blotting (WB), Immunohistochemistry (IHC)

Product Details

Immunogen:	Claudin 8 antibody was raised using the C terminal of CLDN8 corresponding to a region with amino acids IVGGALFCCVFCCNEKSSSYRYSIPSHRTTQKSYHTGKKSPSVYSRSQYV
Specificity:	Claudin 8 antibody was raised against the C terminal of CLDN8
Purification:	Purified

Target Details

Target:	CLDN8
Alternative Name:	Claudin 8 (CLDN8 Products)
Background:	CLDN8, clustered with CLDN17 at human chromosome 21q22.11, is a four-transmembrane protein with WWCC motif, defined by W-X(17-22)-W-X(2)-C-X(8-10)-C.

Target Details

Molecular Weight: 25 kDa (MW of target protein)

Pathways: [Hepatitis C](#)

Application Details

Application Notes: WB: 0.5-1 µg/mL, IHC: 4-8 µg/mL
Optimal conditions should be determined by the investigator.

Comment: Claudin 8 Blocking Peptide, catalog no. 33R-4198, is also available for use as a blocking control in assays to test for specificity of this Claudin 8 antibody

Restrictions: For Research Use only

Handling

Format: Lyophilized

Reconstitution: Lyophilized powder. Add distilled water for a 1 mg/mL concentration of CLDN8 antibody in PBS

Concentration: Lot specific

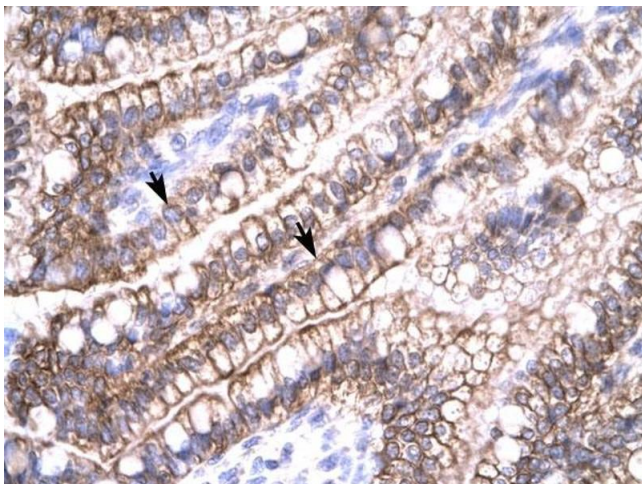
Buffer: PBS

Handling Advice: Avoid repeated freeze/thaw cycles.
Dilute only prior to immediate use.

Storage: 4 °C/-20 °C

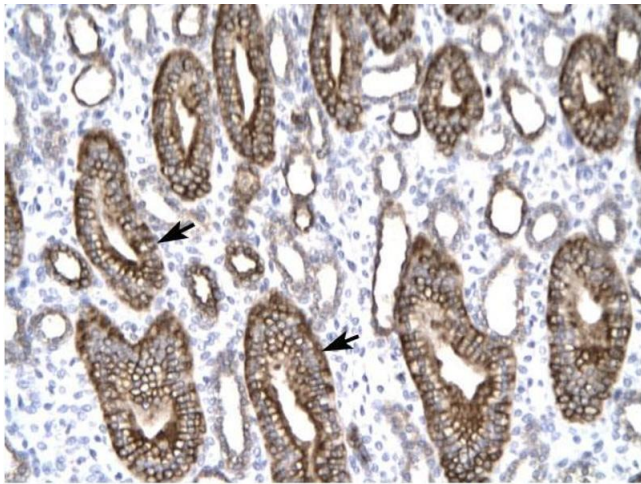
Storage Comment: Store at 2-8 °C for short periods. For longer periods of storage, store at -20 °C.

Images



Immunohistochemistry

Image 1. Claudin 8 antibody was used for immunohistochemistry at a concentration of 4-8 µg/ml to stain Epithelial cells of intestinal villus (arrows) in Human Intestine. Magnification is at 400X



Immunohistochemistry

Image 2. Claudin 8 antibody was used for immunohistochemistry at a concentration of 4-8 ug/ml to stain Epithelial cells of renal tubule (arrows) in Human Kidney. Magnification is at 400X.



Western Blotting

Image 3. Claudin 8 antibody used at 0.5-1.0 ug/ml to detect target protein.