

Datasheet for ABIN630272
anti-ITGBL1 antibody



[Go to Product page](#)

1 Image

Overview

Quantity:	100 µg
Target:	ITGBL1
Reactivity:	Human, Dog
Host:	Rabbit
Clonality:	Polyclonal
Conjugate:	This ITGBL1 antibody is un-conjugated
Application:	Western Blotting (WB)

Product Details

Immunogen:	ITGBL1 antibody was raised using a synthetic peptide corresponding to a region with amino acids MRPPGFRNFLLLASSLLFAGLSAVPQSFSPSLRSWPGAACRLSRAESERR
Purification:	Purified

Target Details

Target:	ITGBL1
Alternative Name:	ITGBL1 (ITGBL1 Products)
Background:	The function of ITGBL1 protein is not widely studied, and is yet to be elucidated fully.
Molecular Weight:	54 kDa (MW of target protein)

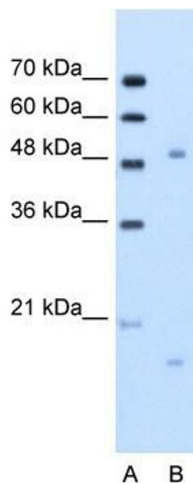
Application Details

Application Notes:	WB: 2.5 µg/mL Optimal conditions should be determined by the investigator.
Comment:	ITGBL1 Blocking Peptide, catalog no. 33R-6373, is also available for use as a blocking control in assays to test for specificity of this ITGBL1 antibody
Restrictions:	For Research Use only

Handling

Format:	Lyophilized
Reconstitution:	Lyophilized powder. Add distilled water for a 1 mg/mL concentration of ITGBL1 antibody in PBS
Concentration:	Lot specific
Buffer:	PBS
Handling Advice:	Avoid repeated freeze/thaw cycles.
Storage:	4 °C/-20 °C
Storage Comment:	Store at 2-8 °C for short periods. For longer periods of storage, store at -20 °C.

Images



Western Blotting

Image 1. ITGBL1 antibody used at 2.5 ug/ml to detect target protein.