

Datasheet for ABIN630277

anti-C-Type Lectin Domain Family 4, Member M (CLEC4M) (N-Term) antibody[Go to Product page](#)**2** Images

Overview

Quantity:	100 µg
Target:	C-Type Lectin Domain Family 4, Member M (CLEC4M)
Binding Specificity:	N-Term
Reactivity:	Human
Host:	Rabbit
Clonality:	Polyclonal
Conjugate:	Un-conjugated
Application:	Western Blotting (WB), Immunohistochemistry (IHC)

Product Details

Immunogen:	CLEC4 M antibody was raised using the N terminal of CLEC4 corresponding to a region with amino acids LVLQLLSFMLLAGVLVAILVQVSKVPSSLSQEQSEQDAIYQNLTLKAAV
Specificity:	CLEC4 M antibody was raised against the N terminal of CLEC4
Purification:	Purified

Target Details

Target:	C-Type Lectin Domain Family 4, Member M (CLEC4M)
Alternative Name:	CLEC4M (CLEC4M Products)
Background:	CLEC4M is a type II integral membrane protein that is 77% identical to CD209 antigen, a HIV gp120-binding protein. This protein, like CD209, efficiently binds both intercellular adhesion molecule 3 (ICAM3) and HIV-1 gp120, and enhances HIV-1 infection of T cells.

Target Details

Molecular Weight: 44 kDa (MW of target protein)

Application Details

Application Notes: WB: 1.25 µg/mL, IHC: 4-8 µg/mL
Optimal conditions should be determined by the investigator.

Comment: CLEC4M Blocking Peptide, catalog no. 33R-5525, is also available for use as a blocking control in assays to test for specificity of this CLEC4M antibody

Restrictions: For Research Use only

Handling

Format: Lyophilized

Reconstitution: Lyophilized powder. Add distilled water for a 1 mg/mL concentration of CLECO antibody in PBS

Concentration: Lot specific

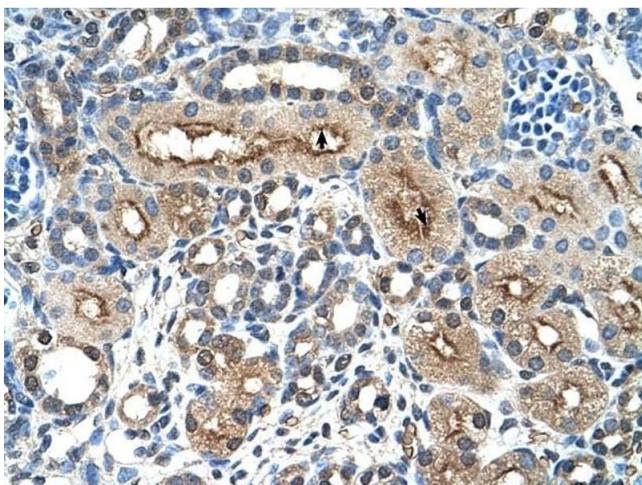
Buffer: PBS

Handling Advice: Avoid repeated freeze/thaw cycles.
Dilute only prior to immediate use.

Storage: 4 °C/-20 °C

Storage Comment: Store at 2-8 °C for short periods. For longer periods of storage, store at -20 °C.

Images



Immunohistochemistry

Image 1. CLEC4M antibody was used for immunohistochemistry at a concentration of 4-8 ug/ml to stain Epithelial cells of renal tubule (arrows) in Human Kidney. Magnification is at 400X



Western Blotting

Image 2. CLEC4M antibody used at 1.25 ug/ml to detect target protein.