

Datasheet for ABIN630288
anti-NOV antibody (C-Term)



[Go to Product page](#)

1 Image

Overview

Quantity:	100 µg
Target:	NOV
Binding Specificity:	C-Term
Reactivity:	Human
Host:	Rabbit
Clonality:	Polyclonal
Conjugate:	This NOV antibody is un-conjugated
Application:	Western Blotting (WB)

Product Details

Immunogen:	NOV antibody was raised using the C terminal of NOV corresponding to a region with amino acids KTIQAEFQCSPGQIVKKPVMVIGTCTCHTNCPKNNEAFLQELELKTTRGK
Specificity:	NOV antibody was raised against the C terminal of NOV
Purification:	Purified

Target Details

Target:	NOV
Alternative Name:	NOV (NOV Products)
Background:	As an immediate-early protein, NOV is likely to play a role in cell growth regulation.
Molecular Weight:	39 kDa (MW of target protein)

Target Details

Pathways: [Smooth Muscle Cell Migration, Growth Factor Binding](#)

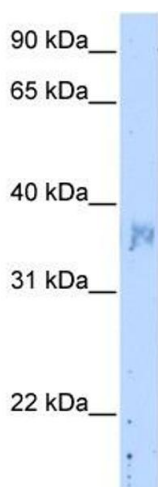
Application Details

Application Notes:	WB: 5 µg/mL Optimal conditions should be determined by the investigator.
Comment:	NOV Blocking Peptide, catalog no. 33R-4680, is also available for use as a blocking control in assays to test for specificity of this NOV antibody
Restrictions:	For Research Use only

Handling

Format:	Lyophilized
Reconstitution:	Lyophilized powder. Add distilled water for a 1 mg/mL concentration of NOV antibody in PBS
Concentration:	Lot specific
Buffer:	PBS
Handling Advice:	Avoid repeated freeze/thaw cycles. Dilute only prior to immediate use.
Storage:	4 °C/-20 °C
Storage Comment:	Store at 2-8 °C for short periods. For longer periods of storage, store at -20 °C.

Images



Western Blotting

Image 1. NOV antibody used at 5 ug/ml to detect target protein.