

Datasheet for ABIN630291

**anti-SDCBP antibody****2** Images[Go to Product page](#)

## Overview

Quantity:	100 µg
Target:	SDCBP
Reactivity:	Human, Rat, Mouse, Dog
Host:	Rabbit
Clonality:	Polyclonal
Conjugate:	This SDCBP antibody is un-conjugated
Application:	Western Blotting (WB), Immunohistochemistry (IHC)

## Product Details

Immunogen:	SDCBP antibody was raised using a synthetic peptide corresponding to a region with amino acids VGIRRAEIKQGIREVILCKDQDGKIGLRLKSIDNGIFVQLVQANSPASLV
Purification:	Purified

## Target Details

Target:	SDCBP
Alternative Name:	SDCBP ( <a href="#">SDCBP Products</a> )
Background:	SDCBP was initially identified as a molecule linking syndecan-mediated signaling to the cytoskeleton. The syntenin protein contains tandemly repeated PDZ domains that bind the cytoplasmic, C-terminal domains of a variety of transmembrane proteins. This protein may also affect cytoskeletal-membrane organization, cell adhesion, protein trafficking, and the activation of transcription factors. The protein is primarily localized to membrane-associated adherens

## Target Details

junctions and focal adhesions but is also found at the endoplasmic reticulum and nucleus.

Molecular Weight: 32 kDa (MW of target protein)

## Application Details

Application Notes: WB: 1.25 µg/mL, IHC: 4-8 µg/mL  
Optimal conditions should be determined by the investigator.

Comment: SDCBP Blocking Peptide, catalog no. 33R-9561, is also available for use as a blocking control in assays to test for specificity of this SDCBP antibody

Restrictions: For Research Use only

## Handling

Format: Lyophilized

Reconstitution: Lyophilized powder. Add distilled water for a 1 mg/mL concentration of SDCBP antibody in PBS

Concentration: Lot specific

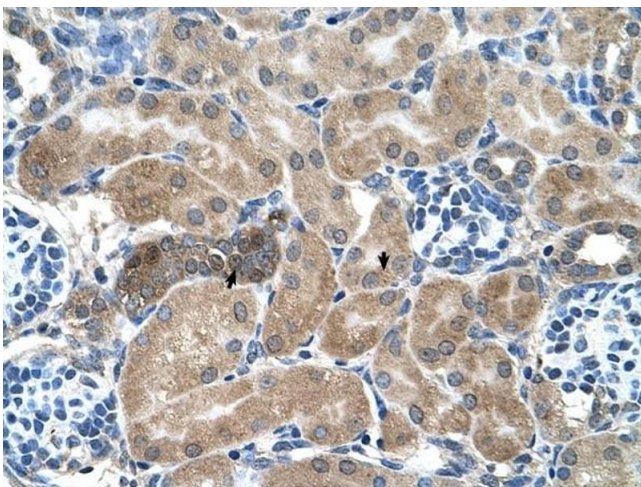
Buffer: PBS

Handling Advice: Avoid repeated freeze/thaw cycles.

Storage: 4 °C/-20 °C

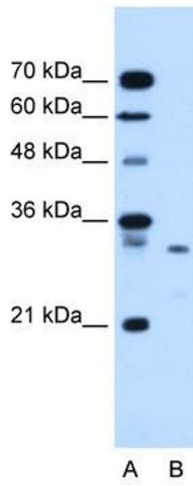
Storage Comment: Store at 2-8 °C for short periods. For longer periods of storage, store at -20 °C.

## Images



### Immunohistochemistry

**Image 1.** SDCBP antibody was used for immunohistochemistry at a concentration of 4-8 ug/ml to stain Epithelial cells of renal tubule (arrows) in Human Kidney. Magnification is at 400X



### Western Blotting

**Image 2.** SDCBP antibody used at 1.25 ug/ml to detect target protein.