

## Datasheet for ABIN630293 **anti-SLC39A6 antibody**

### 2 Images



[Go to Product page](#)

### Overview

Quantity:	100 µg
Target:	SLC39A6
Reactivity:	Human, Mouse, Rat, Dog
Host:	Rabbit
Clonality:	Polyclonal
Conjugate:	This SLC39A6 antibody is un-conjugated
Application:	Western Blotting (WB), Immunohistochemistry (IHC)

### Product Details

Immunogen:	SLC39 A6 antibody was raised using a synthetic peptide corresponding to a region with amino acids RSCLIH TSEKKA EI PPKTYSLQIAWVGGFIAISII SFLSLLGVILVPLMN
Purification:	Purified

### Target Details

Target:	SLC39A6
Alternative Name:	SLC39A6 ( <a href="#">SLC39A6 Products</a> )
Background:	Zinc is an essential cofactor for hundreds of enzymes. It is involved in protein, nucleic acid, carbohydrate, and lipid metabolism, as well as in the control of gene transcription, growth, development, and differentiation. SLC39A6 belongs to a subfamily of proteins that show structural characteristics of zinc transporters.
Molecular Weight:	48 kDa (MW of target protein)

## Target Details

Pathways: [Transition Metal Ion Homeostasis](#)

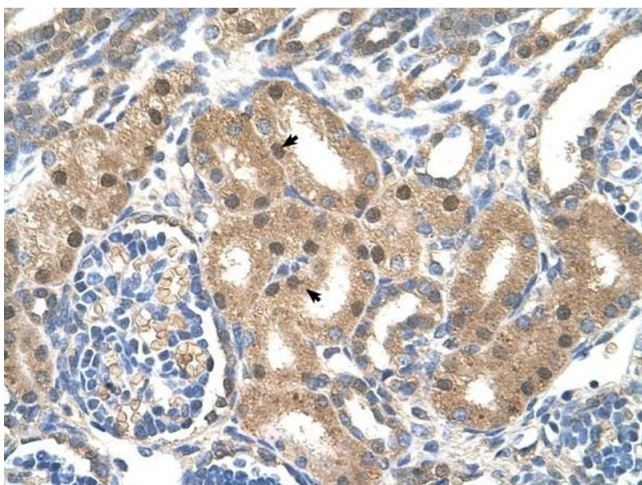
## Application Details

Application Notes:	WB: 1.25 µg/mL, IHC: 4-8 µg/mL Optimal conditions should be determined by the investigator.
Comment:	SLC39A6 Blocking Peptide, catalog no. 33R-8173, is also available for use as a blocking control in assays to test for specificity of this SLC39A6 antibody
Restrictions:	For Research Use only

## Handling

Format:	Lyophilized
Reconstitution:	Lyophilized powder. Add distilled water for a 1 mg/mL concentration of SLC39A6 antibody in PBS
Concentration:	Lot specific
Buffer:	PBS
Handling Advice:	Avoid repeated freeze/thaw cycles.
Storage:	4 °C/-20 °C
Storage Comment:	Store at 2-8 °C for short periods. For longer periods of storage, store at -20 °C.

## Images



### Immunohistochemistry

**Image 1.** SLC39A6 antibody was used for immunohistochemistry at a concentration of 4-8 ug/ml to stain Epithelial cells of renal tubule (arrows) in Human Kidney. Magnification is at 400X



### Western Blotting

**Image 2.** SLC39A6 antibody used at 1.25 ug/ml to detect target protein.