

Datasheet for ABIN630302

anti-ZFYVE27 antibody (Middle Region)[Go to Product page](#)**1** Image

Overview

Quantity:	100 µg
Target:	ZFYVE27
Binding Specificity:	Middle Region
Reactivity:	Human, Rat, Mouse, Dog
Host:	Rabbit
Clonality:	Polyclonal
Conjugate:	This ZFYVE27 antibody is un-conjugated
Application:	Western Blotting (WB)

Product Details

Immunogen:	ZFYVE27 antibody was raised using the middle region of ZFYVE27 corresponding to a region with amino acids VGGKDGLMDSTPALTPTESLSSQDLTPGSVEEAEAEAEPEEFKDAIEETH
Specificity:	ZFYVE27 antibody was raised against the middle region of ZFYVE27
Purification:	Purified

Target Details

Target:	ZFYVE27
Alternative Name:	ZFYVE27 (ZFYVE27 Products)
Background:	ZFYVE27 may be associated with the neuronal intracellular trafficking in the corticospinal tract, which is consistent with the pathology of HSP.

Target Details

Molecular Weight: 46 kDa (MW of target protein)

Pathways: [Neurotrophin Signaling Pathway](#)

Application Details

Application Notes: WB: 1.25 µg/mL
Optimal conditions should be determined by the investigator.

Comment: ZFYVE27 Blocking Peptide, catalog no. 33R-9554, is also available for use as a blocking control in assays to test for specificity of this ZFYVE27 antibody

Restrictions: For Research Use only

Handling

Format: Lyophilized

Reconstitution: Lyophilized powder. Add distilled water for a 1 mg/mL concentration of ZFYVE27 antibody in PBS

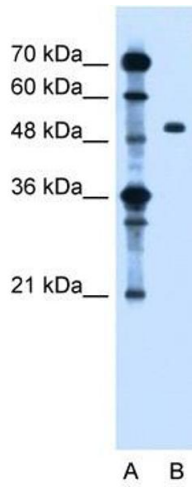
Concentration: Lot specific

Buffer: PBS

Handling Advice: Avoid repeated freeze/thaw cycles.
Dilute only prior to immediate use.

Storage: 4 °C/-20 °C

Storage Comment: Store at 2-8 °C for short periods. For longer periods of storage, store at -20 °C.



Western Blotting

Image 1. ZFYVE27 antibody used at 1.25 ug/ml to detect target protein.