

Datasheet for ABIN630303  
**anti-ZFYVE27 antibody (C-Term)**



[Go to Product page](#)

1 Image

## Overview

Quantity:	100 µg
Target:	ZFYVE27
Binding Specificity:	C-Term
Reactivity:	Human, Rat, Dog, Zebrafish (Danio rerio)
Host:	Rabbit
Clonality:	Polyclonal
Conjugate:	This ZFYVE27 antibody is un-conjugated
Application:	Western Blotting (WB)

## Product Details

Immunogen:	ZFYVE27 antibody was raised using the C terminal of ZFYVE27 corresponding to a region with amino acids TFSVLKRRSCSNCGNSFCRCCSFKVPKSSMGATAPEAQRETVFVCASC
Specificity:	ZFYVE27 antibody was raised against the C terminal of ZFYVE27
Purification:	Purified

## Target Details

Target:	ZFYVE27
Alternative Name:	ZFYVE27 ( <a href="#">ZFYVE27 Products</a> )
Background:	ZFYVE27 may be associated with the neuronal intracellular trafficking in the corticospinal tract, which is consistent with the pathology of HSP.

## Target Details

---

Molecular Weight: 46 kDa (MW of target protein)

Pathways: [Neurotrophin Signaling Pathway](#)

## Application Details

---

Application Notes: WB: 2.5 µg/mL  
Optimal conditions should be determined by the investigator.

Comment: ZFYVE27 Blocking Peptide, catalog no. 33R-9076, is also available for use as a blocking control in assays to test for specificity of this ZFYVE27 antibody

Restrictions: For Research Use only

## Handling

---

Format: Lyophilized

Reconstitution: Lyophilized powder. Add distilled water for a 1 mg/mL concentration of ZFYVE27 antibody in PBS

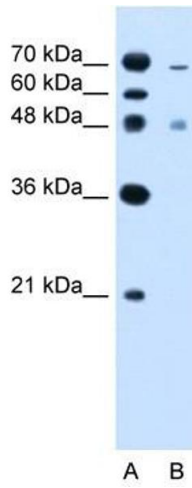
Concentration: Lot specific

Buffer: PBS

Handling Advice: Avoid repeated freeze/thaw cycles.  
Dilute only prior to immediate use.

Storage: 4 °C/-20 °C

Storage Comment: Store at 2-8 °C for short periods. For longer periods of storage, store at -20 °C.



### Western Blotting

**Image 1.** ZFYVE27 antibody used at 2.5 ug/ml to detect target protein.