

Datasheet for ABIN630309 **anti-SLC22A1 antibody**

2 Images



[Go to Product page](#)

Overview

Quantity:	100 µg
Target:	SLC22A1
Reactivity:	Human, Mouse, Rat, Dog
Host:	Rabbit
Clonality:	Polyclonal
Conjugate:	This SLC22A1 antibody is un-conjugated
Application:	Western Blotting (WB), Immunohistochemistry (IHC)

Product Details

Immunogen:	SLC22 A1 antibody was raised using a synthetic peptide corresponding to a region with amino acids LSCVDPLASLATNRSHLPLGPCQDGWVYDTPGSSIVTEFNLVCADSWKLD
Purification:	Purified

Target Details

Target:	SLC22A1
Alternative Name:	SLC22A1 (SLC22A1 Products)
Background:	Polyspecific organic cation transporters in the liver, kidney, intestine, and other organs are critical for elimination of many endogenous small organic cations as well as a wide array of drugs and environmental toxins. SLC22A1 contains twelve putative transmembrane domains and is a plasma integral membrane protein.
Molecular Weight:	61 kDa (MW of target protein)

Target Details

Pathways: [Hormone Transport](#)

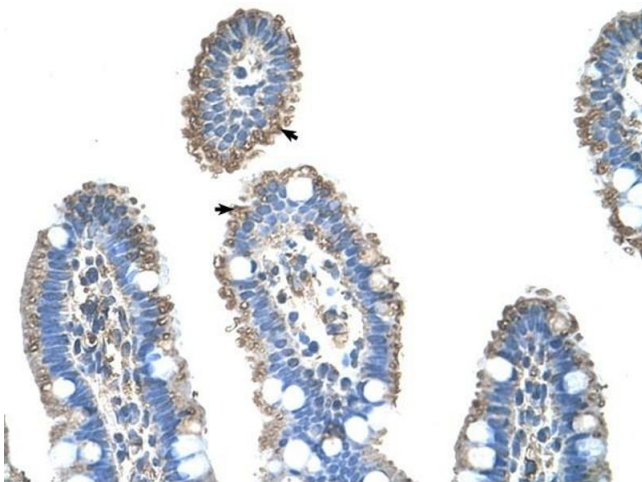
Application Details

Application Notes:	WB: 2.5 µg/mL, IHC: 4-8 µg/mL Optimal conditions should be determined by the investigator.
Comment:	SLC22A1 Blocking Peptide, catalog no. 33R-5413, is also available for use as a blocking control in assays to test for specificity of this SLC22A1 antibody
Restrictions:	For Research Use only

Handling

Format:	Lyophilized
Reconstitution:	Lyophilized powder. Add distilled water for a 1 mg/mL concentration of SLC20 1 antibody in PBS
Concentration:	Lot specific
Buffer:	PBS
Handling Advice:	Avoid repeated freeze/thaw cycles.
Storage:	4 °C/-20 °C
Storage Comment:	Store at 2-8 °C for short periods. For longer periods of storage, store at -20 °C.

Images



Immunohistochemistry

Image 1. SLC22A1 antibody was used for immunohistochemistry at a concentration of 4-8 ug/ml to stain Epithelial cells of intestinal villus (arrows) in Human Intestine. Magnification is at 400X



Western Blotting

Image 2. SLC22A1 antibody used at 2.5 ug/ml to detect target protein.