

Datasheet for ABIN630313  
**anti-SLC25A29 antibody (C-Term)**



[Go to Product page](#)

1 Image

## Overview

Quantity:	100 µg
Target:	SLC25A29
Binding Specificity:	C-Term
Reactivity:	Human, Mouse, Rat, Dog
Host:	Rabbit
Clonality:	Polyclonal
Conjugate:	This SLC25A29 antibody is un-conjugated
Application:	Western Blotting (WB)

## Product Details

Immunogen:	SLC25 A29 antibody was raised using the C terminal of SLC25 29 corresponding to a region with amino acids AEGWRVFRGLASTLLRAFPVNAATFATVTVVLTLYARGEAGPEGEAVPA
Specificity:	SLC25 A29 antibody was raised against the C terminal of SLC25 29
Purification:	Purified

## Target Details

Target:	SLC25A29
Alternative Name:	SLC25A29 ( <a href="#">SLC25A29 Products</a> )
Background:	SLC25A29 belongs to the mitochondrial carrier family and it may has palmitoylcarnitine transporting activity.

## Target Details

---

Molecular Weight: 33 kDa (MW of target protein)

## Application Details

---

Application Notes: WB: 1.25 µg/mL  
Optimal conditions should be determined by the investigator.

Comment: SLC25A29 Blocking Peptide, catalog no. 33R-1129, is also available for use as a blocking control in assays to test for specificity of this SLC25A29 antibody

Restrictions: For Research Use only

## Handling

---

Format: Lyophilized

Reconstitution: Lyophilized powder. Add distilled water for a 1 mg/mL concentration of SLC20 29 antibody in PBS

Concentration: Lot specific

Buffer: PBS

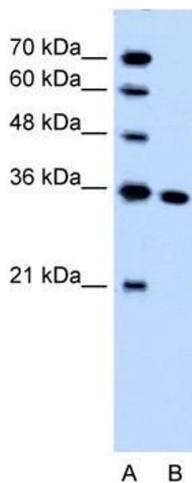
Handling Advice: Avoid repeated freeze/thaw cycles.  
Dilute only prior to immediate use.

Storage: 4 °C/-20 °C

Storage Comment: Store at 2-8 °C for short periods. For longer periods of storage, store at -20 °C.

## Images

---



### Western Blotting

**Image 1.** SLC25A29 antibody used at 1.25 ug/ml to detect target protein.