

Datasheet for ABIN630320
anti-SLC25A46 antibody (N-Term)



[Go to Product page](#)

1 Image

Overview

Quantity:	100 µg
Target:	SLC25A46
Binding Specificity:	N-Term
Reactivity:	Human, Mouse, Rat, Zebrafish (Danio rerio)
Host:	Rabbit
Clonality:	Polyclonal
Conjugate:	This SLC25A46 antibody is un-conjugated
Application:	Western Blotting (WB)

Product Details

Immunogen:	SLC25 A46 antibody was raised using the N terminal of SLC25 46 corresponding to a region with amino acids RSFSTGSDLGHWVTTPPDIPGSRNLHWGEKSPPYGVPTTSTPYEGPTEEP
Specificity:	SLC25 A46 antibody was raised against the N terminal of SLC25 46
Purification:	Purified

Target Details

Target:	SLC25A46
Alternative Name:	SLC25A46 (SLC25A46 Products)
Background:	SLC25A46 is a members of the solute carrier family 25 (SLC25) which is known to transport molecules over the mitochondrial membrane.

Target Details

Molecular Weight: 46 kDa (MW of target protein)

Application Details

Application Notes: WB: 5 µg/mL
Optimal conditions should be determined by the investigator.

Comment: SLC25A46 Blocking Peptide, catalog no. 33R-8179, is also available for use as a blocking control in assays to test for specificity of this SLC25A46 antibody

Restrictions: For Research Use only

Handling

Format: Lyophilized

Reconstitution: Lyophilized powder. Add distilled water for a 1 mg/mL concentration of SLC20 46 antibody in PBS

Concentration: Lot specific

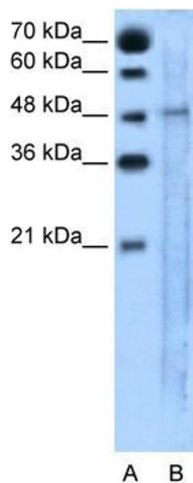
Buffer: PBS

Handling Advice: Avoid repeated freeze/thaw cycles.
Dilute only prior to immediate use.

Storage: 4 °C/-20 °C

Storage Comment: Store at 2-8 °C for short periods. For longer periods of storage, store at -20 °C.

Images



Western Blotting

Image 1. SLC25A46 antibody used at 5 ug/ml to detect target protein.