

Datasheet for ABIN630321  
**anti-SLC25A16 antibody (N-Term)**



[Go to Product page](#)

1 Image

## Overview

|                      |   |
|----------------------|---|
| Quantity:            | 100 µg                                  |
| Target:              | SLC25A16                                |
| Binding Specificity: | N-Term                                  |
| Reactivity:          | Human, Mouse, Rat                       |
| Host:                | Rabbit                                  |
| Clonality:           | Polyclonal                              |
| Conjugate:           | This SLC25A16 antibody is un-conjugated |
| Application:         | Western Blotting (WB)                   |

## Product Details

|               |  |
|---------------|--|
| Immunogen:    | SLC25 A16 antibody was raised using the N terminal of SLC25 16 corresponding to a region with amino acids KTTVAPLDRVKVLQAHNHYYKHLGVFSALRAVPQKEGFLGLYKGNAMM |
| Specificity:  | SLC25 A16 antibody was raised against the N terminal of SLC25 16   |
| Purification: | Purified   |

## Target Details

|                   |  |
|-------------------|--|
| Target:           | SLC25A16   |
| Alternative Name: | SLC25A16 ( <a href="#">SLC25A16 Products</a> )   |
| Background:       | SLC25A16 is a protein that contains three tandemly repeated mitochondrial carrier protein domains. The protein is localized in the inner membrane and facilitates the rapid transport and exchange of molecules between the cytosol and the mitochondrial matrix space. SLC25A16 |

## Target Details

---

gene has a possible role in Graves' disease.

Molecular Weight: 36 kDa (MW of target protein)

## Application Details

---

Application Notes: WB: 5 µg/mL

Optimal conditions should be determined by the investigator.

Comment: SLC25A16 Blocking Peptide, catalog no. 33R-4697, is also available for use as a blocking control in assays to test for specificity of this SLC25A16 antibody

Restrictions: For Research Use only

## Handling

---

Format: Lyophilized

Reconstitution: Lyophilized powder. Add distilled water for a 1 mg/mL concentration of SLC20 16 antibody in PBS

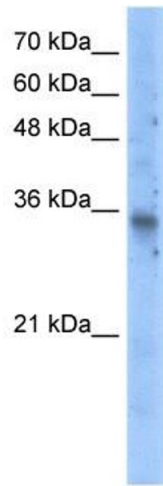
Concentration: Lot specific

Buffer: PBS

Handling Advice: Avoid repeated freeze/thaw cycles.  
Dilute only prior to immediate use.

Storage: 4 °C/-20 °C

Storage Comment: Store at 2-8 °C for short periods. For longer periods of storage, store at -20 °C.



### Western Blotting

**Image 1.** SLC25A16 antibody used at 5 ug/ml to detect target protein.