

Datasheet for ABIN630331  
**anti-Reticulon 2 antibody (N-Term)**



[Go to Product page](#)

3 Images

## Overview

Quantity:	100 µg
Target:	Reticulon 2 (RTN2)
Binding Specificity:	N-Term
Reactivity:	Human, Mouse, Rat
Host:	Rabbit
Clonality:	Polyclonal
Conjugate:	This Reticulon 2 antibody is un-conjugated
Application:	Western Blotting (WB), Immunohistochemistry (IHC)

## Product Details

Immunogen:	RTN2 antibody was raised using the N terminal of RTN2 corresponding to a region with amino acids MGQVLPVFAHCKEAPSTASSTPDSTEGGNDSDSFRELHTAREFSEEDDEE
Specificity:	RTN2 antibody was raised against the N terminal of RTN2
Purification:	Purified

## Target Details

Target:	Reticulon 2 (RTN2)
Alternative Name:	RTN2 ( <a href="#">RTN2 Products</a> )
Background:	This gene belongs to the family of reticulon encoding genes. Reticulons are associated with the endoplasmic reticulum, and are involved in neuroendocrine secretion or in membrane trafficking in neuroendocrine cells.

## Target Details

---

Molecular Weight: 51 kDa (MW of target protein)

## Application Details

---

Application Notes: WB: 2.5 µg/mL, IHC: 4-8 µg/mL  
Optimal conditions should be determined by the investigator.

Comment: RTN2 Blocking Peptide, catalog no. 33R-6064, is also available for use as a blocking control in assays to test for specificity of this RTN2 antibody

Restrictions: For Research Use only

## Handling

---

Format: Lyophilized

Reconstitution: Lyophilized powder. Add distilled water for a 1 mg/mL concentration of RTN2 antibody in PBS

Concentration: Lot specific

Buffer: PBS

Handling Advice: Avoid repeated freeze/thaw cycles.  
Dilute only prior to immediate use.

Storage: 4 °C/-20 °C

Storage Comment: Store at 2-8 °C for short periods. For longer periods of storage, store at -20 °C.

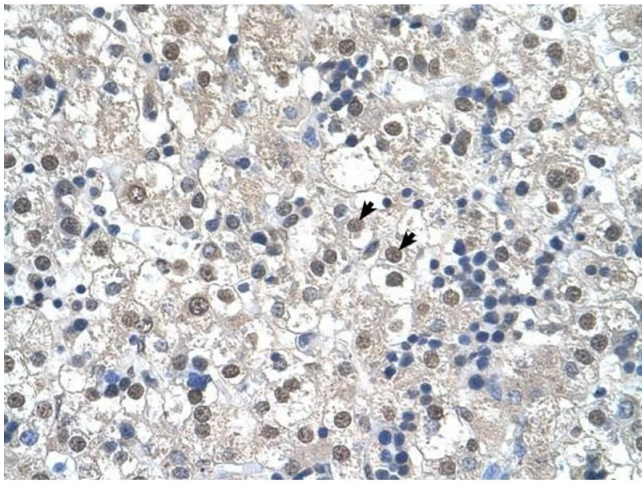
## Images

---



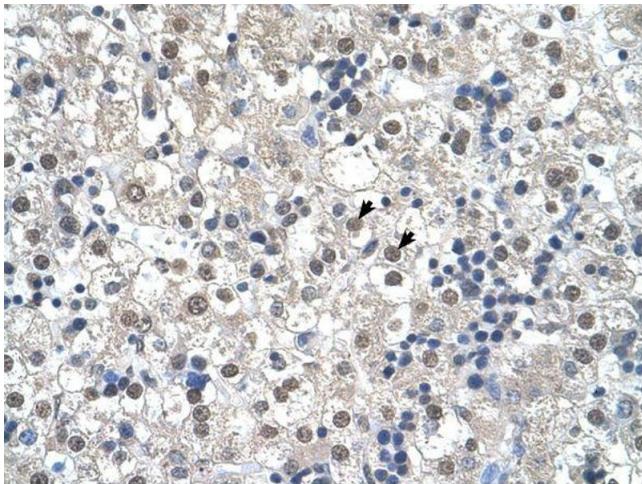
### Western Blotting

**Image 1.** RTN2 antibody used at 2.5 µg/ml to detect target protein.



#### Immunohistochemistry

**Image 2.** RTN2 antibody was used for immunohistochemistry at a concentration of 4-8 ug/ml to stain Hepatocytes (arrows) in Human Liver. Magnification is at 400X



#### Immunohistochemistry

**Image 3.** RTN2 antibody was used for immunohistochemistry at a concentration of 4-8 ug/ml. Magnification is at 400X