

Datasheet for ABIN630334  
**anti-Pannexin 2 antibody (N-Term)**



[Go to Product page](#)

2 Images

## Overview

Quantity:	100 µg
Target:	Pannexin 2 (PANX2)
Binding Specificity:	N-Term
Reactivity:	Mammalian
Host:	Rabbit
Clonality:	Polyclonal
Conjugate:	This Pannexin 2 antibody is un-conjugated
Application:	Western Blotting (WB), Immunohistochemistry (IHC)

## Product Details

Immunogen:	Pannexin 2 antibody was raised using the N terminal of PANX2 corresponding to a region with amino acids GTVLVPILLVTLVFTKNFAEEPIYCYTPHNFTRDQALYARGYCWTELRDA
Specificity:	Pannexin 2 antibody was raised against the N terminal of PANX2
Cross-Reactivity:	Human, Mouse (Murine), Rat (Rattus), Dog (Canine), Zebrafish (Danio rerio)
Purification:	Purified

## Target Details

Target:	Pannexin 2 (PANX2)
Alternative Name:	Pannexin 2 ( <a href="#">PANX2 Products</a> )
Background:	PANX2 belongs to the innexin family. Innexin family members are the structural components of

## Target Details

---

gap junctions. This protein and pannexin 1 are abundantly expressed in central nerve system (CNS) and are coexpressed in various neuronal populations. Studies in *Xenopus* oocytes suggest that this protein alone and in combination with pannexin 1 may form cell type-specific gap junctions with distinct properties.

---

Molecular Weight: 70 kDa (MW of target protein)

## Application Details

---

Application Notes: WB: 1.25 µg/mL, IHC: 4-8 µg/mL  
Optimal conditions should be determined by the investigator.

---

Comment: Pannexin 2 Blocking Peptide, catalog no. 33R-3625, is also available for use as a blocking control in assays to test for specificity of this Pannexin 2 antibody

---

Restrictions: For Research Use only

## Handling

---

Format: Lyophilized

---

Reconstitution: Lyophilized powder. Add distilled water for a 1 mg/mL concentration of PANX2 antibody in PBS

---

Concentration: Lot specific

---

Buffer: PBS

---

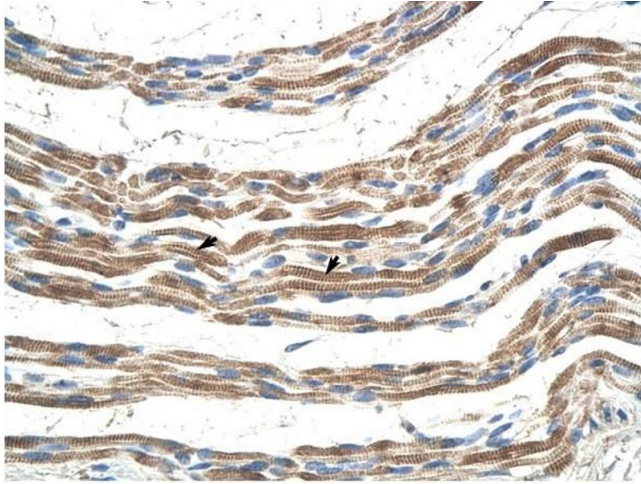
Handling Advice: Avoid repeated freeze/thaw cycles.  
Dilute only prior to immediate use.

---

Storage: 4 °C/-20 °C

---

Storage Comment: Store at 2-8 °C for short periods. For longer periods of storage, store at -20 °C.



### Immunohistochemistry

**Image 1.** Pannexin 2 antibody was used for immunohistochemistry at a concentration of 4-8 ug/ml to stain Skeletal muscle cells (arrows) in Human Muscle. Magnification is at 400X



### Western Blotting

**Image 2.** Pannexin 2 antibody used at 1.25 ug/ml to detect target protein.