

Datasheet for ABIN630338 **anti-SEC63 antibody**



[Go to Product page](#)

1 Image

Overview

Quantity:	100 µg
Target:	SEC63
Reactivity:	Human, Mouse, Dog
Host:	Rabbit
Clonality:	Polyclonal
Conjugate:	This SEC63 antibody is un-conjugated
Application:	Western Blotting (WB)

Product Details

Immunogen:	SEC63 antibody was raised using a synthetic peptide corresponding to a region with amino acids WWLYIADRKEQTLISMPYHVCTLKDTEEVELKFPAPGKPGNYQYTVFLRS
Purification:	Purified

Target Details

Target:	SEC63
Alternative Name:	SEC63 (SEC63 Products)
Background:	The Sec61 complex is the central component of the protein translocation apparatus of the endoplasmic reticulum (ER) membrane. SEC63 and SEC62 protein are found to be associated with ribosome-free SEC61 complex. It is speculated that Sec61-Sec62-Sec63 may perform post-translational protein translocation into the ER. The Sec61-Sec62-Sec63 complex might also perform the backward transport of ER proteins that are subject to the ubiquitin-

Target Details

proteasome-dependent degradation pathway. SEC63 is an integral membrane protein located in the rough ER.

Molecular Weight: 88 kDa (MW of target protein)

Pathways: [ER-Nucleus Signaling](#)

Application Details

Application Notes: WB: 1.25 µg/mL
Optimal conditions should be determined by the investigator.

Comment: SEC63 Blocking Peptide, catalog no. 33R-10039, is also available for use as a blocking control in assays to test for specificity of this SEC63 antibody

Restrictions: For Research Use only

Handling

Format: Lyophilized

Reconstitution: Lyophilized powder. Add distilled water for a 1 mg/mL concentration of SEC63 antibody in PBS

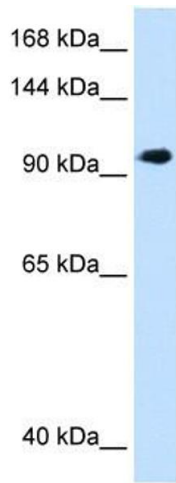
Concentration: Lot specific

Buffer: PBS

Handling Advice: Avoid repeated freeze/thaw cycles.

Storage: 4 °C/-20 °C

Storage Comment: Store at 2-8 °C for short periods. For longer periods of storage, store at -20 °C.



Western Blotting

Image 1. SEC63 antibody used at 1.25 ug/ml to detect target protein.