

Datasheet for ABIN630340
anti-SLC10A5 antibody

2 Images



[Go to Product page](#)

Overview

| | |
|--------------|---|
| Quantity: | 100 µg |
| Target: | SLC10A5 |
| Reactivity: | Human |
| Host: | Rabbit |
| Clonality: | Polyclonal |
| Conjugate: | This SLC10A5 antibody is un-conjugated |
| Application: | Immunohistochemistry (IHC), Western Blotting (WB) |

Product Details

| | |
|---------------|--|
| Immunogen: | SLC10 A5 antibody was raised using a synthetic peptide corresponding to a region with amino acids GYSFAKVCTLPLPVCKTVAIESGMLNSFLALAVIQLSFPQSKANLASVAP |
| Purification: | Purified |

Target Details

| | |
|-------------------|---|
| Target: | SLC10A5 |
| Alternative Name: | SLC10A5 (SLC10A5 Products) |
| Background: | SLC10A5 is a new member of Solute Carrier Family 10 (SLC10) and the function remains unknown. |
| Molecular Weight: | 48 kDa (MW of target protein) |

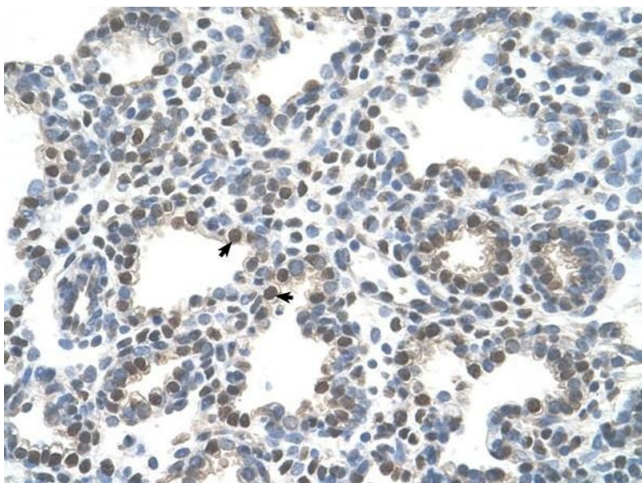
Application Details

| | |
|--------------------|--|
| Application Notes: | WB: 1.25 µg/mL, IHC: 4-8 µg/mL Optimal conditions should be determined by the investigator. |
| Comment: | SLC10A5 Blocking Peptide, catalog no. 33R-3684, is also available for use as a blocking control in assays to test for specificity of this SLC10A5 antibody |
| Restrictions: | For Research Use only |

Handling

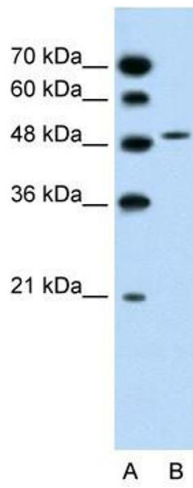
| | |
|------------------|--|
| Format: | Lyophilized |
| Reconstitution: | Lyophilized powder. Add distilled water for a 1 mg/mL concentration of SLC10 5 antibody in PBS |
| Concentration: | Lot specific |
| Buffer: | PBS |
| Handling Advice: | Avoid repeated freeze/thaw cycles. |
| Storage: | 4 °C/-20 °C |
| Storage Comment: | Store at 2-8 °C for short periods. For longer periods of storage, store at -20 °C. |

Images



Immunohistochemistry

Image 1. SLC10A5 antibody was used for immunohistochemistry at a concentration of 4-8 µg/ml to stain Alveolar cells (arrows) in Human Lung. Magnification is at 400X



Western Blotting

Image 2. SLC10A5 antibody used at 1.25 ug/ml to detect target protein.