

Datasheet for ABIN630342 **anti-SLC1A5 antibody**



[Go to Product page](#)

2 Images

1 Publication

Overview

Quantity:	100 µg
Target:	SLC1A5
Reactivity:	Human, Mouse, Rat, Dog
Host:	Rabbit
Clonality:	Polyclonal
Conjugate:	This SLC1A5 antibody is un-conjugated
Application:	Western Blotting (WB), Immunohistochemistry (IHC)

Product Details

Immunogen:	SLC1 A5 antibody was raised using a synthetic peptide corresponding to a region with amino acids FGVALRKLGPPEGELLIRFFNSFNEATMVLVSWIMWYAPVGMFLVAGKIV
Purification:	Purified

Target Details

Target:	SLC1A5
Alternative Name:	SLC1A5 (SLC1A5 Products)
Background:	SLC1A5 has a broad substrate specificity, a preference for zwitterionic amino acids, and a sodium-dependence. It accepts as substrates all neutral amino acids, including glutamine, asparagine, and branched-chain and aromatic amino acids, and excludes methylated amino acids, anionic amino acids, and cationic amino acids. It acts as a cell surface receptor for feline endogenous virus RD114, baboon M7 endogenous virus and type D simian retroviruses.

Target Details

Molecular Weight: 60 kDa (MW of target protein)

Pathways: [Dicarboxylic Acid Transport, Warburg Effect](#)

Application Details

Application Notes: WB: 2.5 µg/mL, IHC: 4-8 µg/mL
Optimal conditions should be determined by the investigator.

Comment: SLC1A5 Blocking Peptide, catalog no. 33R-2915, is also available for use as a blocking control in assays to test for specificity of this SLC1A5 antibody

Restrictions: For Research Use only

Handling

Format: Lyophilized

Reconstitution: Lyophilized powder. Add distilled water for a 1 mg/mL concentration of SLC0 5 antibody in PBS

Concentration: Lot specific

Buffer: PBS

Handling Advice: Avoid repeated freeze/thaw cycles.

Storage: 4 °C/-20 °C

Storage Comment: Store at 2-8 °C for short periods. For longer periods of storage, store at -20 °C.

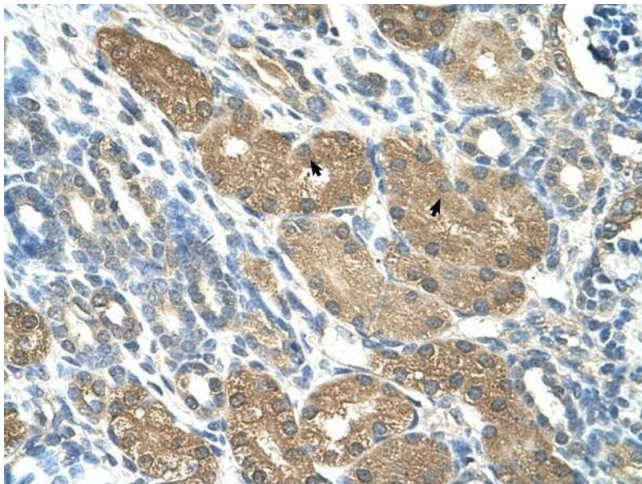
Publications

Product cited in: Krämer, Gröner, Hoffmann, Craig, Brugger, Drzezga, Timmer, Neumaier, Zlatopolskiy, Endepols, Neumaier: "Evaluation of 3-I- and 3-d-[18F]Fluorophenylalanines as PET Tracers for Tumor Imaging." in: **Cancers**, Vol. 13, Issue 23, (2021) ([PubMed](#)).



Western Blotting

Image 1. SLC1A5 antibody used at 2.5 ug/ml to detect target protein.



Immunohistochemistry

Image 2. SLC1A5 antibody was used for immunohistochemistry at a concentration of 4-8 ug/ml to stain Epithelial cells of renal tubule (arrows) in Human Kidney. Magnification is at 400X