

## Datasheet for ABIN630343 **anti-AGPAT2 antibody (C-Term)**



[Go to Product page](#)

### 1 Image

#### Overview

Quantity:	100 µg
Target:	AGPAT2
Binding Specificity:	C-Term
Reactivity:	Human
Host:	Rabbit
Clonality:	Polyclonal
Conjugate:	This AGPAT2 antibody is un-conjugated
Application:	Western Blotting (WB)

#### Product Details

Immunogen:	AGPAT2 antibody was raised using the C terminal of AGPAT2 corresponding to a region with amino acids LEAIP T SGLTAADVPALVDTCHRAMRTTFLHISKTPQENGATAGSGVQPA
Specificity:	AGPAT2 antibody was raised against the C terminal of AGPAT2
Purification:	Purified

#### Target Details

Target:	AGPAT2
Alternative Name:	AGPAT2 ( <a href="#">AGPAT2 Products</a> )
Background:	AGPAT2 is a member of the 1-acylglycerol-3-phosphate O-acyltransferase family. The protein is located within the endoplasmic reticulum membrane and converts lysophosphatidic acid to phosphatidic acid, the second step in de novo phospholipid biosynthesis. Mutations in its gene

## Target Details

---

have been associated with congenital generalized lipodystrophy (CGL), or Berardinelli-Seip syndrome, a disease characterized by a near absence of adipose tissue and severe insulin resistance.

Molecular Weight: 27 kDa (MW of target protein)

## Application Details

---

Application Notes: WB: 5 µg/mL  
Optimal conditions should be determined by the investigator.

Comment: AGPAT2 Blocking Peptide, catalog no. 33R-4874, is also available for use as a blocking control in assays to test for specificity of this AGPAT2 antibody

Restrictions: For Research Use only

## Handling

---

Format: Lyophilized

Reconstitution: Lyophilized powder. Add distilled water for a 1 mg/mL concentration of AGPAT2 antibody in PBS

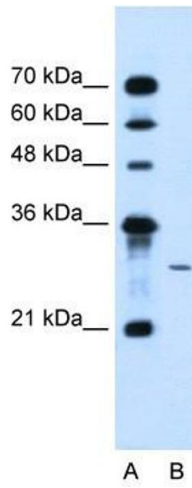
Concentration: Lot specific

Buffer: PBS

Handling Advice: Avoid repeated freeze/thaw cycles.  
Dilute only prior to immediate use.

Storage: 4 °C/-20 °C

Storage Comment: Store at 2-8 °C for short periods. For longer periods of storage, store at -20 °C.



### Western Blotting

**Image 1.** AGPAT2 antibody used at 5 ug/ml to detect target protein.