

Datasheet for ABIN630345 **anti-SGCG antibody**



[Go to Product page](#)

1 Image

Overview

Quantity:	100 µg
Target:	SGCG
Reactivity:	Human, Mouse, Rat, Dog
Host:	Rabbit
Clonality:	Polyclonal
Conjugate:	This SGCG antibody is un-conjugated
Application:	Western Blotting (WB)

Product Details

Immunogen:	SGCG antibody was raised using a synthetic peptide corresponding to a region with amino acids FTVDEKEVWVGTDKLRVTGPEGALFEHSVETPLVRADPFQDLRLESPTRS
Purification:	Purified

Target Details

Target:	SGCG
Alternative Name:	SGCG (SGCG Products)
Background:	Gamma-sarcoglycan is one of several sarcolemmal transmembrane glycoproteins that interact with dystrophin, probably to provide a link between the membrane associated cytoskeleton and the extracellular matrix. Defects in the protein can lead to early onset autosomal recessive muscular dystrophy, in particular limb-girdle muscular dystrophy, type 2C (LGMD2C).Gamma-sarcoglycan is one of several sarcolemmal transmembrane glycoproteins that interact with

Target Details

dystrophin, probably to provide a link between the membrane associated cytoskeleton and the extracellular matrix. Defects in the protein can lead to early onset autosomal recessive muscular dystrophy, in particular limb-girdle muscular dystrophy, type 2C (LGMD2C).

Molecular Weight: 32 kDa (MW of target protein)

Application Details

Application Notes: WB: 1.25 µg/mL
Optimal conditions should be determined by the investigator.

Comment: SGCG Blocking Peptide, catalog no. 33R-3107, is also available for use as a blocking control in assays to test for specificity of this SGCG antibody

Restrictions: For Research Use only

Handling

Format: Lyophilized

Reconstitution: Lyophilized powder. Add distilled water for a 1 mg/mL concentration of SGCG antibody in PBS

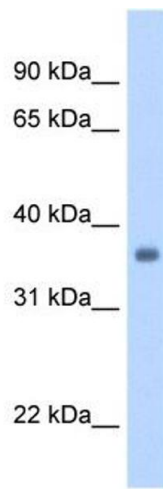
Concentration: Lot specific

Buffer: PBS

Handling Advice: Avoid repeated freeze/thaw cycles.

Storage: 4 °C/-20 °C

Storage Comment: Store at 2-8 °C for short periods. For longer periods of storage, store at -20 °C.



Western Blotting

Image 1. SGCG antibody used at 1.25 ug/ml to detect target protein.