

Datasheet for ABIN630349  
**anti-UBE2J1 antibody**

3 Images



[Go to Product page](#)

## Overview

Quantity:	100 µg
Target:	UBE2J1
Reactivity:	Human, Mouse
Host:	Rabbit
Clonality:	Polyclonal
Conjugate:	This UBE2J1 antibody is un-conjugated
Application:	Western Blotting (WB), Immunohistochemistry (IHC)

## Product Details

Immunogen:	UBE2 J1 antibody was raised using a synthetic peptide corresponding to a region with amino acids METRYNLKSPAVKRLMKEAAELKDPTDHYHAQPLEDNLFQWHFTVRGPPD
Purification:	Purified

## Target Details

Target:	UBE2J1
Alternative Name:	UBE2J1 ( <a href="#">UBE2J1 Products</a> )
Background:	The modification of proteins with ubiquitin is an important cellular mechanism for targeting abnormal or short-lived proteins for degradation. Ubiquitination involves at least three classes of enzymes: ubiquitin-activating enzymes, or E1s, ubiquitin-conjugating enzymes, or E2s, and ubiquitin-protein ligases, or E3s. UBE2J1 is a member of the E2 ubiquitin-conjugating enzyme family. This enzyme is located in the membrane of the endoplasmic reticulum (ER) and may

## Target Details

contribute to quality control ER-associated degradation by the ubiquitin-proteasome system.

Molecular Weight: 35 kDa (MW of target protein)

## Application Details

Application Notes: WB: 2.5 µg/mL, IHC: 4-8 µg/mL  
Optimal conditions should be determined by the investigator.

Comment: UBE2J1 Blocking Peptide, catalog no. 33R-5976, is also available for use as a blocking control in assays to test for specificity of this UBE2J1 antibody

Restrictions: For Research Use only

## Handling

Format: Lyophilized

Reconstitution: Lyophilized powder. Add distilled water for a 1 mg/mL concentration of UBE0 1 antibody in PBS

Concentration: Lot specific

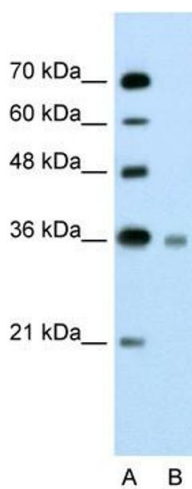
Buffer: PBS

Handling Advice: Avoid repeated freeze/thaw cycles.

Storage: 4 °C/-20 °C

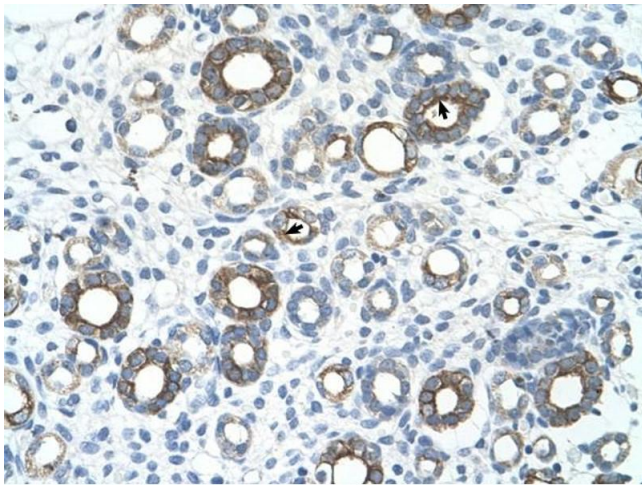
Storage Comment: Store at 2-8 °C for short periods. For longer periods of storage, store at -20 °C.

## Images



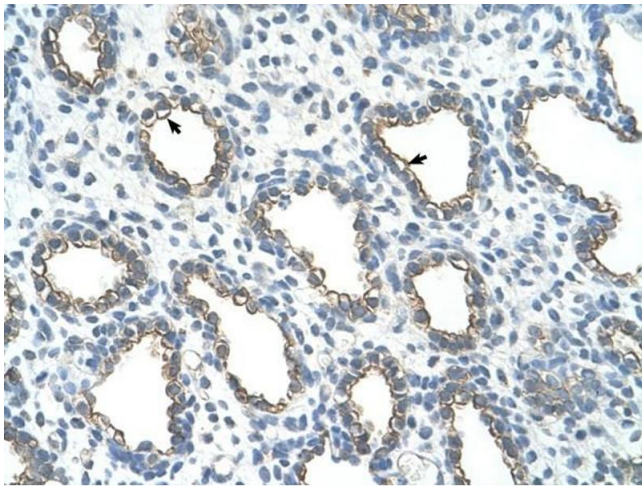
### Western Blotting

**Image 1.** UBE2J1 antibody used at 2.5 µg/ml to detect target protein.



#### Immunohistochemistry

**Image 2.** UBE2J1 antibody was used for immunohistochemistry at a concentration of 4-8 ug/ml to stain Epithelial cells of renal tubule (arrows) in Human Kidney. Magnification is at 400X



#### Immunohistochemistry

**Image 3.** UBE2J1 antibody was used for immunohistochemistry at a concentration of 4-8 ug/ml to stain Alveolar cells (arrows) in Human Lung. Magnification is at 400X.