

## Datasheet for ABIN630350 **anti-UBE2J2 antibody**

### 2 Images



[Go to Product page](#)

### Overview

Quantity:	100 µg
Target:	UBE2J2
Reactivity:	Human, Mouse, Rat, Dog
Host:	Rabbit
Clonality:	Polyclonal
Conjugate:	This UBE2J2 antibody is un-conjugated
Application:	Western Blotting (WB), Immunohistochemistry (IHC)

### Product Details

Immunogen:	UBE2 J2 antibody was raised using a synthetic peptide corresponding to a region with amino acids GIQLLNHGHPGAVPNLAGLQANRHHGLLGALANLFVIVGFAAFAYTVK
Purification:	Purified

### Target Details

Target:	UBE2J2
Alternative Name:	UBE2J2 ( <a href="#">UBE2J2 Products</a> )
Background:	The modification of proteins with ubiquitin is an important cellular mechanism for targeting abnormal or short-lived proteins for degradation. Ubiquitination involves at least three classes of enzymes: ubiquitin-activating enzymes, or E1s, ubiquitin-conjugating enzymes, or E2s, and ubiquitin-protein ligases, or E3s. UBE2J2 is a member of the E2 ubiquitin-conjugating enzyme family. This enzyme is located in the membrane of the endoplasmic reticulum.

## Target Details

---

Molecular Weight: 30 kDa (MW of target protein)

## Application Details

---

Application Notes: WB: 1.25 µg/mL, IHC: 4-8 µg/mL  
Optimal conditions should be determined by the investigator.

Comment: UBE2J2 Blocking Peptide, catalog no. 33R-3342, is also available for use as a blocking control in assays to test for specificity of this UBE2J2 antibody

Restrictions: For Research Use only

## Handling

---

Format: Lyophilized

Reconstitution: Lyophilized powder. Add distilled water for a 1 mg/mL concentration of UBE2J2 antibody in PBS

Concentration: Lot specific

Buffer: PBS

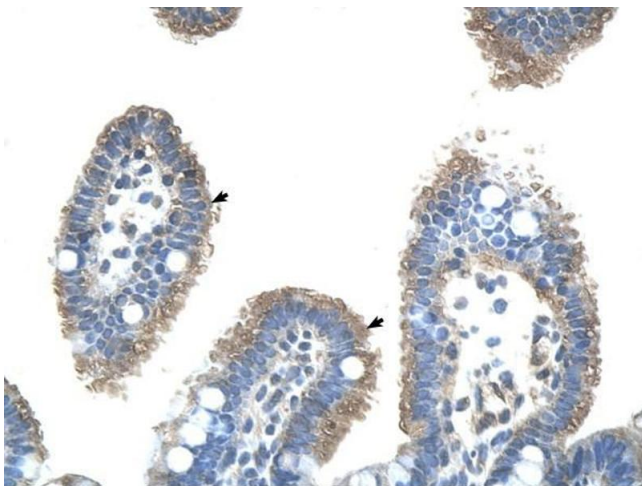
Handling Advice: Avoid repeated freeze/thaw cycles.

Storage: 4 °C/-20 °C

Storage Comment: Store at 2-8 °C for short periods. For longer periods of storage, store at -20 °C.

## Images

---



### Immunohistochemistry

**Image 1.** UBE2J2 antibody was used for immunohistochemistry at a concentration of 4-8 µg/ml to stain Epithelial cells of intestinal villus (arrows) in Human Intestine. Magnification is at 400X



### Western Blotting

**Image 2.** UBE2J2 antibody used at 1.25 ug/ml to detect target protein.